



## **MPSEOC | MONTANA COLLEGES**

**MONTANA POST SECONDARY EDUCATIONAL OPPORTUNITIES COUNCIL**

501 c 3 Nonprofit | Est. 1991

[MONTANACOLLEGES.com](http://MONTANACOLLEGES.com) | [MPSEOC.org](http://MPSEOC.org)



**CELEBRATING  
OVER 30 YEARS  
OF SERVICE**

- \* [OVERVIEW OF MPSEOC | MISSION, VISION, & VALUES](#)
- \* [MPSEOC MEMBERS](#)
- \* [MPSEOC PROGRAMS, SERVICES, & PARTNERS](#)
- \* [TIMELINE OF EVENTS](#)
- \* [THANK YOU TO ALL OUR MEMBERS & SUPPORTERS](#)



### MISSION

THE MONTANA POST-SECONDARY EDUCATIONAL OPPORTUNITIES COUNCIL (MPSEOC) IS A NON-PROFIT ORGANIZATION REPRESENTING THE 25 INSTITUTIONS OF HIGHER EDUCATION ACROSS THE STATE OF MONTANA. THE MISSION OF THE ORGANIZATION IS THE PROMOTION OF HIGHER EDUCATION TO STUDENTS, FAMILIES, COUNSELORS, AND SCHOOLS WITH THE AWARENESS OF THE POST-SECONDARY OPPORTUNITIES AVAILABLE THROUGHOUT THE STATE OF MONTANA AND BEYOND.

### VISION

CHANGING THE WORLD BY CONNECTING, EDUCATING, AND EMPOWERING THROUGH HIGHER EDUCATIONAL OPPORTUNITIES.

### VALUES

**INTEGRITY** | FIRM ETHICAL ADHERENCE DEMONSTRATED THROUGH PERSONAL AND PROFESSIONAL ACTIONS.

**LEADERSHIP** | THE ABILITY TO CULTIVATE RELATIONSHIPS IN ORDER TO COMPLETE THE GOALS AND MISSION WITH FLEXIBILITY AND EMPOWERMENT.

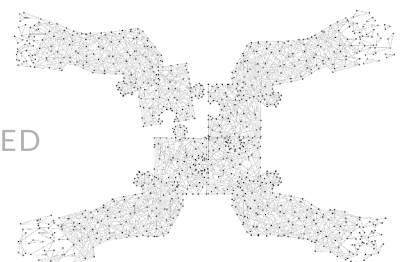
**EDUCATION** | PLACING EMPHASIS ON LIFE-LONG LEARNING.

**DIVERSE COMMUNITY** | AN INCLUSIVE ORGANIZATION THAT RESPECTS AND SUPPORTS EVERYONE'S UNIQUE CHARACTERISTICS TO ACHIEVE THEIR EDUCATIONAL GOALS.

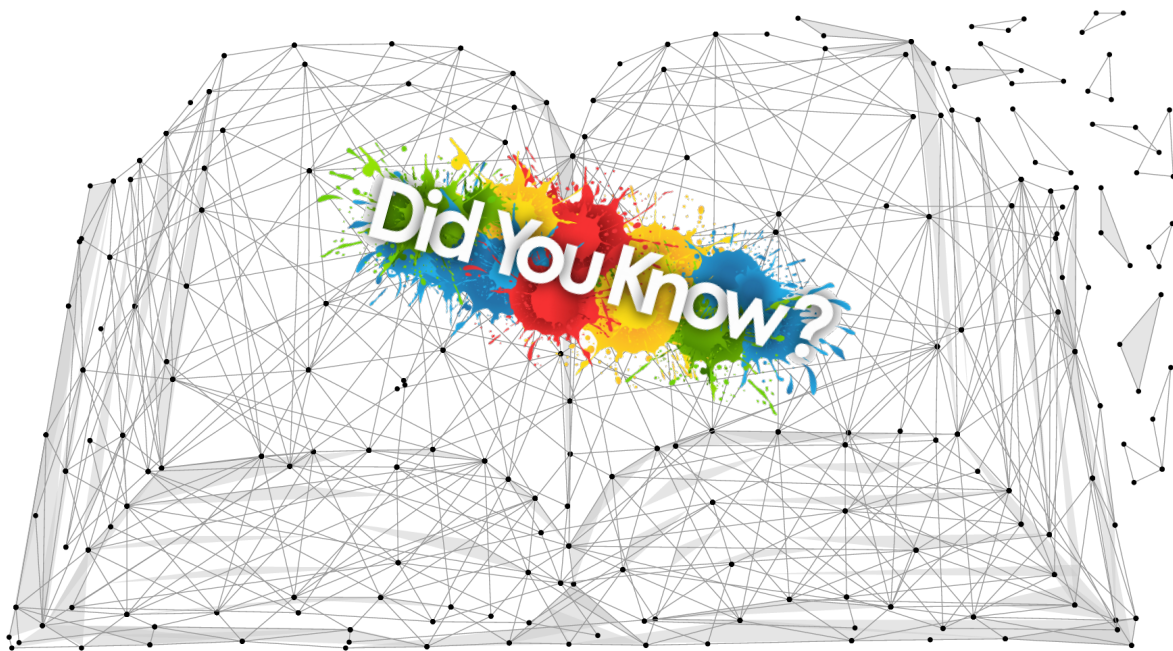
**COLLABORATIVE RELATIONSHIPS** | PROVIDING OPPORTUNITIES FOR WORKING TOGETHER TO FORM RESPECTFUL CONNECTIONS.



HELPING KEEP MONTANA EDUCATION CONNECTED  
CELEBRATING OVER 30 YEARS

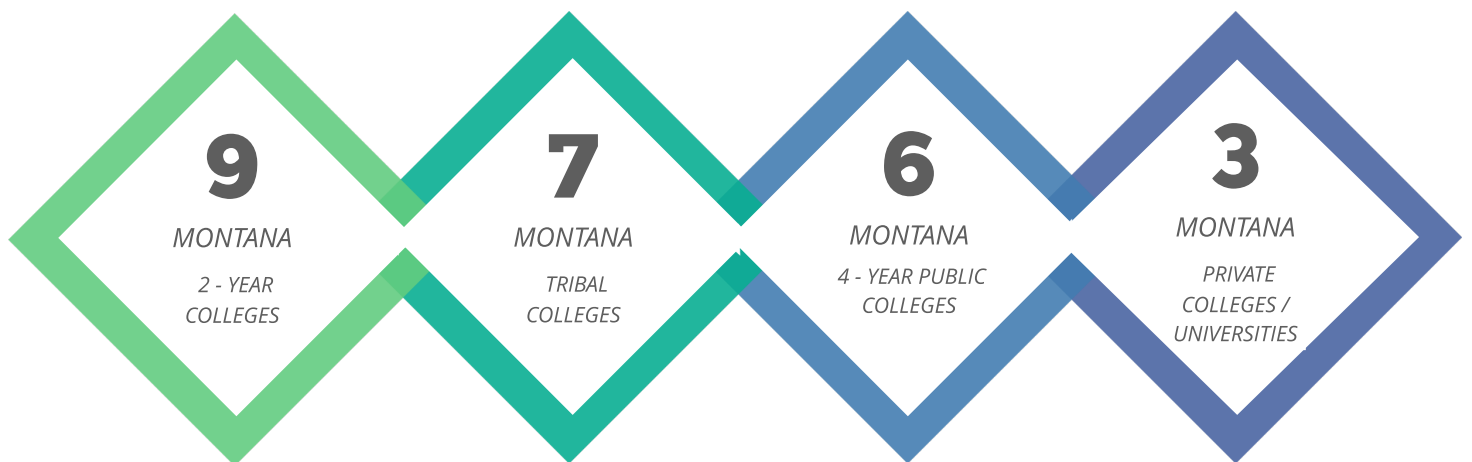


# OVERVIEW *of* MPSEOC MEMBERS



## MEET OUR MEMBER INSTITUTIONS

AANIIH NAKODA COLLEGE | [WWW.ANCOLLEGE.EDU](http://WWW.ANCOLLEGE.EDU)  
BLACKFEET COMMUNITY COLLEGE | [WWW.BFCC.EDU](http://WWW.BFCC.EDU)  
CARROLL COLLEGE | [WWW.CARROLL.EDU](http://WWW.CARROLL.EDU)  
CHIEF DULL KNIFE COLLEGE | [WWW.CDKC.EDU](http://WWW.CDKC.EDU)  
CITY COLLEGE MSU BILLINGS | [WWW.CITYCOLLEGE.MSUBILLINGS.EDU](http://WWW.CITYCOLLEGE.MSUBILLINGS.EDU)  
DAWSON COMMUNITY COLLEGE | [WWW.DAWSON.EDU](http://WWW.DAWSON.EDU)  
FLATHEAD VALLEY COMMUNITY COLLEGE | [WWW.FVCC.EDU](http://WWW.FVCC.EDU)  
FORT PECK COMMUNITY COLLEGE | [WWW.FPCC.EDU](http://WWW.FPCC.EDU)  
GALLATIN COLLEGE MSU | [WWW.GALLATIN.MONTANA.EDU](http://WWW.GALLATIN.MONTANA.EDU)  
GREAT FALLS COLLEGE MSU | [WWW.GFCMSU.EDU](http://WWW.GFCMSU.EDU)  
HELENA COLLEGE UM | [WWW.HELENACOLLEGE.EDU](http://WWW.HELENACOLLEGE.EDU)  
HIGHLANDS COLLEGE OF MONTANA TECH | [WWW.MTECH.EDU](http://WWW.MTECH.EDU)  
LITTLE BIG HORN COLLEGE | [WWW.LBHC.EDU](http://WWW.LBHC.EDU)  
MILES COMMUNITY COLLEGE | [WWW.MILESCC.EDU](http://WWW.MILESCC.EDU)  
MISSOULA COLLEGE UM & BITTERROOT COLLEGE UM | [MC.UMT.EDU](http://MC.UMT.EDU)  
MONTANA STATE UNIVERSITY | [WWW.MONTANA.EDU](http://WWW.MONTANA.EDU)  
MONTANA STATE UNIVERSITY - NORTHERN | [WWW.MSUN.EDU](http://WWW.MSUN.EDU)  
MONTANA STATE UNIVERSITY BILLINGS | [WWW.MSUBILLINGS.EDU](http://WWW.MSUBILLINGS.EDU)  
MONTANA TECHNOLOGICAL UNIVERSITY OF UM | [WWW.MTECH.EDU](http://WWW.MTECH.EDU)  
ROCKY MOUNTAIN COLLEGE | [WWW.ROCKY.EDU](http://WWW.ROCKY.EDU)  
SALISH KOOTENAI COLLEGE | [WWW.SKCC.EDU](http://WWW.SKCC.EDU)  
STONE CHILD COLLEGE | [WWW.STONECHILD.EDU](http://WWW.STONECHILD.EDU)  
THE UNIVERSITY OF MONTANA WESTERN | [WWW.UMWESTERN.EDU](http://WWW.UMWESTERN.EDU)  
UNIVERSITY OF MONTANA | [ADMISSIONS.UMT.EDU](http://ADMISSIONS.UMT.EDU)  
UNIVERSITY OF PROVIDENCE | [WWW.UPROVIDENCE.EDU](http://WWW.UPROVIDENCE.EDU)





# MPSEOC

*outline of*

# MAJOR PROGRAMS & SERVICES

## MPSEOC MAJOR PROGRAMS

### COLLEGE & CAREER FAIRS | VIRTUAL EXPLORATION EVENTS

EACH YEAR MPSEOC TEAMS ACROSS THE STATE AND BEYOND TO BRING SERVICE TO STUDENTS IN OFFERING 18 STATEWIDE FAIRS IN THE FALL, 7 FAIRS IN THE SPRING, AND HAS OFFERED MANY VIRTUAL EXPLORATION EVENTS. MPSEOC IS CELEBRATING OVER 30 YEARS OF OFFERING THESE FAIRS FOR OUR STUDENTS IN MONTANA. THANK YOU TO ALL WHO CONTINUE TO HELP MAKE THESE EVENTS POSSIBLE.

**FOR MORE INFORMATION VISIT:** [MONTANACOLLEGEFAIRS.COM](http://MONTANACOLLEGEFAIRS.COM)

### THE INSIDER GUIDE BOOK TO HIGHER EDUCATION

HOSTED ONLINE AND IN PRINT. EACH FALL WE PRINT THIS BOOK FREE FOR ALL MONTANA HIGH SCHOOLS AND HIGH SCHOOL COUNSELORS. THE ONLINE GUIDE BOOK AND OUR [MONTANACOLLEGES.COM](http://MONTANACOLLEGES.COM) WEBSITE REACH 1,000'S OF VISITORS FROM ALL OVER THE WORLD EACH YEAR.

**FOR MORE INFORMATION VISIT:** [MONTANACOLLEGES.COM/GUIDEBOOK](http://MONTANACOLLEGES.COM/GUIDEBOOK)

### SUMMER CONFERENCE

EACH YEAR WE HOST A STATEWIDE CONFERENCE FOR OUR 120+ ADMISSIONS PROFESSIONALS AND MEMBERS. THIS CONFERENCE OFFERS NATIONALLY RENOWNED SPEAKERS TO SHARE IN OUR MEMBERSHIP'S PROFESSIONAL DEVELOPMENT.

**FOR MORE INFORMATION VISIT:** [WWW.MPSEOC.ORG/CONFERENCE](http://WWW.MPSEOC.ORG/CONFERENCE)

### MONTANA TRIBAL COLLEGE FAIR CIRCUIT & INSTITUTE

FOR THE LAST 15+ YEARS, OUR MONTANA TRIBAL COLLEGES TEAM TO HOST STATEWIDE EVENTS AT EACH CAMPUS. THESE EVENTS ARE DESIGNED TO SERVE STUDENTS AND BUILD RELATION TO HELP OUR STUDENTS EVEN MORE. THE LAST FEW YEARS THIS TEAM HAS ALSO HOSTED A VIRTUAL INSTITUTE THAT HAS REACHED 100'S OF EDUCATION PROFESSIONALS ACROSS THE WORLD.

**FOR MORE INFORMATION VISIT:** [MONTANATRIBALCOLLEGES.ORG](http://MONTANATRIBALCOLLEGES.ORG)

### MONTANA TRAVEL GUIDEBOOK

MPSEOC CREATED THIS RESOURCE FOR OUR MEMBERS AND TRAVELING REPRESENTATIVES TO HELP WITH NAVIGATING OUR BIG STATE. WITH HOTEL & RESTAURANT RECOMMENDATIONS AND ALSO MANY TRAVEL TIPS, THIS IS A HELPFUL TOOL TO USE WHILE YOU ARE ON THE ROAD.

**FOR MORE INFORMATION VISIT:** [MONTANACOLLEGEFAIRS.COM/GUIDE](http://MONTANACOLLEGEFAIRS.COM/GUIDE)

### VIRTUAL & HYBRID OFFERINGS

SINCE COVID-19 IMPACTS, WE HAVE TAKEN MAJOR STEPS TO MOVE OUR PROGRAMMING TO ACCOMMODATE VIRTUAL AND HYBRID OFFERINGS WHEN POSSIBLE. WE OFFERED MANY STUDENTS EVENTS DURING COVID, AND WE ARE PROUD TO SAY WE DID NOT CANCEL ANY STUDENTS EVENTS DURING THIS TIME. WE WERE ABLE TO STILL OFFER OUR SERVICES DURING THIS TIME AND CONTINUE TO OFFER ACCOMMODATIONS WITH OUR EVENTS.

### LIVE SAFETY FEATURES

SINCE COVID-19 IMPACTS, ALL OF OUR IN-PERSON EVENTS HAVE BEEN UPDATED TO INCLUDE LIVE SAFETY UPDATES. THIS ALLOWS ALL ATTENDEES TO SEE LIVE UPDATES RIGHT BEFORE THE EVENT. THIS HAS BEEN A MAJOR STEP IN ADDING SAFETY TO OUR EVENTS AND HAS EMPOWERED SITE HOSTS TO SHARE INSTANT UPDATES AS NEEDED.

### COUNSELOR UPDATE

EACH YEAR, WE HOST OVER 200 COUNSELORS, EDUCATORS, AND COLLEGES IN ATTENDANCE AT 9 DIFFERENT SITES ACROSS MONTANA. WE TEAM ACROSS THE STATE TO HOST THIS EVENT IN-PERSON AND VIRTUALLY.

**FOR MORE INFORMATION VISIT:** [MONTANACOLLEGES.COM/UPDATE](http://MONTANACOLLEGES.COM/UPDATE)

### CAMPUS COUNSELOR TRAINING

THIS SERVICE OFFERS OUR MEMBER CAMPUSES THE OPPORTUNITY TO HAVE HOSTED COUNSELOR TRAININGS WITH APPROVED OPI COUNSELOR CREDIT.

**FOR MORE INFORMATION VISIT:** [WWW.MPSEOC.ORG/COUNSELORTRAINING](http://WWW.MPSEOC.ORG/COUNSELORTRAINING)

### COLLEGE & CAREER ONLINE PROFILES

EACH MEMBER CAMPUS AND MANY OTHER INSTITUTIONS HOST AN ONLINE PROFILE ON OUR WEBSITE TO SHARE AN OVERVIEW OF OPPORTUNITIES IN ONE PLACE. THIS RESOURCE HAS BEEN UPDATE TO BE A DYNAMIC RESOURCE THAT CAN BE UPDATED AT ANY TIME BY THE INSTITUTIONS. THANK YOU MEMBER CAMPUSES FOR HELPING KEEP THIS UPDATED THROUGHOUT THE YEAR!

**FOR MORE INFORMATION VISIT:** [MONTANACOLLEGES.COM/PROFILE](http://MONTANACOLLEGES.COM/PROFILE)

### STATEWIDE ANNUAL CAMPAIGNS | MONTANA GIVES BACK & SUPPORT MONTANA STUDENTS

EACH YEAR WE HOST AND SUPPORT THESE CAMPAIGNS TO HELP SUPPORT STUDENTS, SCHOOLS, COUNSELORS, & EDUCATION.

**FOR MORE INFORMATION VISIT:** [SUPPORTMONTANASTUDENTS.ORG](http://SUPPORTMONTANASTUDENTS.ORG) | [MONTANAGIVESBACK.ORG](http://MONTANAGIVESBACK.ORG)

### NEW! MONTANA COLLEGE & CAREER EVENTS CALENDAR

WE ARE SO EXCITED TO SHARE THIS NEW RESOURCE AND EVENTS CALENDAR! A SPECIAL THANK YOU TO ALL OUR MEMBERS FOR MAKING THIS POSSIBLE.

**FOR MORE INFORMATION VISIT:** [MONTANACOLLEGES.COM/CALENDAR](http://MONTANACOLLEGES.COM/CALENDAR)





# MPSEOC *honors* PARTNERSHIP

## PARTNERSHIP & COLLABORATION



MPSEOC CONTINUES TO FORM NEW RELATIONSHIPS AS AN AVENUE TO GROW PARTNERSHIPS AND EXPAND OUR SERVICE, MISSION, AND REACH.

WE CONTINUED TO GROW AND INCREASE RELATIONSHIPS WITH OUR FELLOW ASSOCIATIONS: MACRAO, MASFAA, MSCA, ETC. EACH YEAR WE ATTEND SEVERAL OF THEIR CONFERENCES. WE ALSO CONTINUE TO WORK CLOSELY WITH THESE ASSOCIATIONS FOR THE COUNSELOR UPDATE, SUMMER CONFERENCE, COLLEGE & CAREER FAIRS, COLLEGE APPLICATION WEEK, FINANCIAL AID EVENTS, AND MANY MORE.

MPSEOC ALSO PRIDES ITSELF IN KEEPING CLOSE RELATIONS AND CONTACT WITH OUR MONTANA HIGH SCHOOLS. THROUGHOUT THE YEAR, WE VISIT SEVERAL HIGH SCHOOLS AND DO PRESENTATIONS ABOUT COLLEGE & LIFE AFTER HIGH SCHOOL PREPARATION. ALSO, MPSEOC HAS BEEN IN ATTENDANCE OF SEVERAL OTHER CAREER FAIRS & TRAININGS AROUND THE STATE AS REQUESTED AND AS WE ARE ABLE.

MPSEOC SERVES AND IS A MEMBER ON THE MONTANA COLLEGE ATTAINMENT NETWORK WHICH CONNECTS US DIRECTLY WITH THE MAJOR EDUCATION ENTITIES IN MONTANA.

## VISIT US ON THE WEB!

| RESOURCES FOR STUDENTS, COUNSELORS, PARENTS & BEYOND:  
[MONTANACOLLEGES.COM/.ORG/.NET](http://MONTANACOLLEGES.COM/.ORG/.NET)

| RESOURCES FOR OUR MEMBERSHIP:  
[MPSEOC.ORG](http://MPSEOC.ORG)

| RESOURCES FOR THE TRIBAL COLLEGE FAIRS, INSTITUTE, & TEAM:  
[MONTANATRIBALCOLLEGES.ORG](http://MONTANATRIBALCOLLEGES.ORG)

| RESOURCES FOR FALL COLLEGE FAIRS:  
[MONTANACOLLEGEFAIRS.COM](http://MONTANACOLLEGEFAIRS.COM) |

| RESOURCES FOR STATEWIDE STUDENT SUPPORT CAMPAIGNS:  
[SUPPORTMONTANASTUDENTS.ORG](http://SUPPORTMONTANASTUDENTS.ORG)  
[MONTANAGIVESBACK.ORG](http://MONTANAGIVESBACK.ORG)

## *thank you to our partners*

- ALL MONTANA HIGH SCHOOLS
- ALL MONTANA COLLEGES & UNIVERSITIES
  - GEAR UP
- MONTANA UNIVERSITY SYSTEM - STUDENT FINANCIAL SERVICES
  - OFFICE OF PUBLIC INSTRUCTION / OPI
  - AMERICAN INDIAN COLLEGE FUND
  - REACH HIGHER MONTANA
- MONTANA YOUTH APPRENTICESHIP
- MONTANA DEPARTMENT OF LABOR & INDUSTRY
  - MACRAO
  - MASFAA
- MONTANA SCHOOL COUNSELORS ASSOCIATION
- MONTANA COLLEGE ATTAINMENT NETWORK -MCAN
  - ACT
- THE COLLEGE BOARD | SAT
  - PNACAC / NACAC
- JOB CORPS & JOB SERVICE
  - TALENT SEARCH / TRIO
- CAMPUS COMPACTS & VISTA
- MANY OUT-OF-STATE COLLEGES & UNIVERSITIES
- MANY SCHOOLS, STATE AGENCIES, BUSINESSES, & ORGANIZATIONS LISTED ON THE BACK PAGE.

TOGETHER  
WE ARE ABLE  
TO HELP  
STUDENTS  
EVEN MORE!





## JANUARY

- | LAST WEEK OF THE MONTH, UPDATE THE STATEWIDE CALENDAR WITH YOUR EVENTS FOR NEXT MONTH.
- | UPDATE ONLINE PROFILE ON [MONTANACOLLEGES.COM](http://MONTANACOLLEGES.COM) WITH NEW YEAR CHANGES.
- | CHECK YOUR MEMBERSHIP DIRECTORY LISTING ON [MPSEOC.ORG](http://MPSEOC.ORG).
- | SHARE ANY FEEDBACK, IDEAS, GOALS YOU HAVE FOR THE NEW MPSEOC YEAR.

## FEBRUARY

- | LAST WEEK OF THE MONTH, UPDATE THE STATEWIDE CALENDAR WITH YOUR EVENTS FOR NEXT MONTH.
- | SHARE ANY FEEDBACK YOU HAVE FOR THE UPCOMING BOARD MEETING.
- | END OF FEBRUARY / EARLY MARCH - MPSEOC BOARD ANNUAL RETREAT - CHECK [MPSEOC.ORG/BOARD](http://MPSEOC.ORG/BOARD) FOR DETAILS.

## MARCH

- | LAST WEEK OF THE MONTH, UPDATE THE STATEWIDE CALENDAR WITH YOUR EVENTS FOR NEXT MONTH.
- | END OF MARCH TO EARLY APRIL | MONTANA TRIBAL COLLEGE FAIR CIRCUIT
- | LOOK FOR FALL COLLEGE FAIR INVITE
- | LOOK FOR GUIDE BOOK ADVERTISEMENT INVITE
- | SHARE ANY FEEDBACK YOU HAVE FOR THE UPCOMING BOARD MEETING.

## APRIL

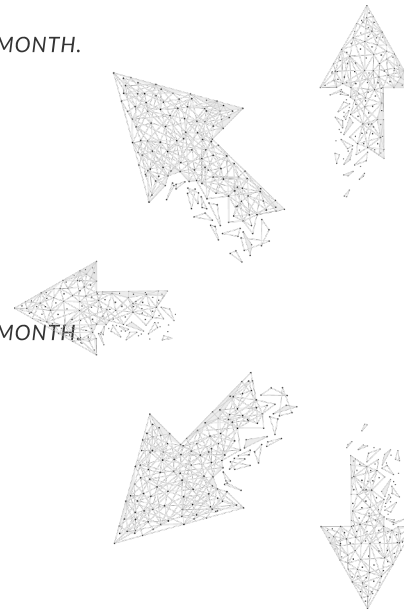
- | LAST WEEK OF THE MONTH, UPDATE THE STATEWIDE CALENDAR WITH YOUR EVENTS FOR NEXT MONTH.
- | END OF MARCH TO EARLY APRIL | MONTANA TRIBAL COLLEGE FAIR CIRCUIT
- | MPSEOC BOARD MEETING - CHECK [MPSEOC.ORG/BOARD](http://MPSEOC.ORG/BOARD) FOR DETAILS.
- | MPSEOC NEW BOARD NOMINATIONS OPEN
- | MPSEOC MEMBERSHIP AWARD NOMINATIONS OPEN
- | SUMMER CONFERENCE - SHARE SPEAKER IDEAS / FEEDBACK
- | CHECK YOUR MEMBERSHIP DIRECTORY LISTING ON [MPSEOC.ORG](http://MPSEOC.ORG)

## MAY

- | LAST WEEK OF THE MONTH, UPDATE THE STATEWIDE CALENDAR WITH YOUR EVENTS FOR NEXT MONTH.
- | LOOK FOR SUMMER CONFERENCE INVITATIONS
- | START WORKING ON CREATING YOUR GUIDE ADVERTISEMENT - IF YOU NEED HELP, WE ARE HAPPY TO HELP!
- | SHARE ANY FEEDBACK YOU HAVE FOR THE UPCOMING BOARD MEETING.
- | END OF MAY - BEGINNING OF JUNE | MPSEOC BOARD MEETING - CHECK [MPSEOC.ORG/BOARD](http://MPSEOC.ORG/BOARD) FOR DETAILS.

## JUNE

- | LAST WEEK OF THE MONTH, UPDATE THE STATEWIDE CALENDAR WITH YOUR EVENTS FOR NEXT MONTH.
- | CONTINUE TO WORK ON YOUR GUIDE ADVERTISEMENT - IF YOU NEED HELP, WE ARE HAPPY TO HELP!





# MARK YOUR CALENDAR

## TIMELINE *of* EVENTS

### JULY

- | LAST WEEK OF THE MONTH, UPDATE THE STATEWIDE CALENDAR WITH YOUR EVENTS FOR NEXT MONTH.
  - | EARLY JULY - DEADLINE TO REGISTER FOR FALL FAIR TOUR REGISTRATION / PAYMENT
  - | END OF JULY - DEADLINE TO SUBMIT YOUR GUIDE ADVERTISEMENT
- | UPDATE YOUR [MONTANACOLLEGES.COM](http://MONTANACOLLEGES.COM) PROFILE - ADD NEW PICTURES, VIDEOS, TUITION, QUESTIONS TO ASK YOU AT THE FAIR, WHICH FAIRS YOU WILL BE ATTENDING, ETC.
  - | EARLY -MID JULY - DEADLINE FOR SUMMER CONFERENCE REGISTRATION / PAYMENT

### AUGUST

- | LAST WEEK OF THE MONTH, UPDATE THE STATEWIDE CALENDAR WITH YOUR EVENTS FOR NEXT MONTH.
  - | END OF JULY TO EARLY AUGUST – MPSEOC SUMMER CONFERENCE
- | AUGUST @ CONFERENCE | MPSEOC BOARD MEETIN - CHECK [MPSEOC.ORG/BOARD](http://MPSEOC.ORG/BOARD) FOR DETAILS.
  - | AUGUST@ CONFERENCE –MEMBERSHIP ANNUAL LIVE MEETING
  - | CHECK YOUR MEMBERSHIP DIRECTORY LISTING ON [MPSEOC.ORG](http://MPSEOC.ORG)

### SEPTEMBER

- | LAST WEEK OF THE MONTH, UPDATE THE STATEWIDE CALENDAR WITH YOUR EVENTS FOR NEXT MONTH.
  - | EASTERN REGION - MONTANA COLLEGE FAIR TOUR
  - | CENTRAL REGION - MONTANA COLLEGE FAIR TOUR
  - | WESTERN REGION - MONTANA COLLEGE FAIR TOUR
- | SEPTEMBER CELEBRATION OF MONTANA STUDENTS | [SUPPORTMONTANASTUDENTS.ORG](http://SUPPORTMONTANASTUDENTS.ORG)
- | MONTANA GIVES BACK CAMPAIGN PROMOTION FOR STUDENTS | [MONTANAGIVESBACK.ORG](http://MONTANAGIVESBACK.ORG)

### OCTOBER

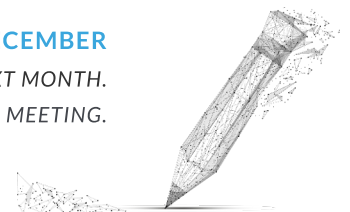
- | LAST WEEK OF THE MONTH, UPDATE THE STATEWIDE CALENDAR WITH YOUR EVENTS FOR NEXT MONTH.
  - DEADLINE - COUNSELOR UPDATE REGISTRATION / PAYMENT / SUBMIT PRINTED GUIDEBOOK INFO
  - | END OF OCTOBER OR EARLY NOVEMBER - COUNSELOR UPDATE

### NOVEMBER

- | LAST WEEK OF THE MONTH, UPDATE THE STATEWIDE CALENDAR WITH YOUR EVENTS FOR NEXT MONTH.
  - END OF OCTOBER OR EARLY NOVEMBER - COUNSELOR UPDATE
- | SHARE ANY FEEDBACK YOU HAVE FOR THE UPCOMING BOARD MEETING.

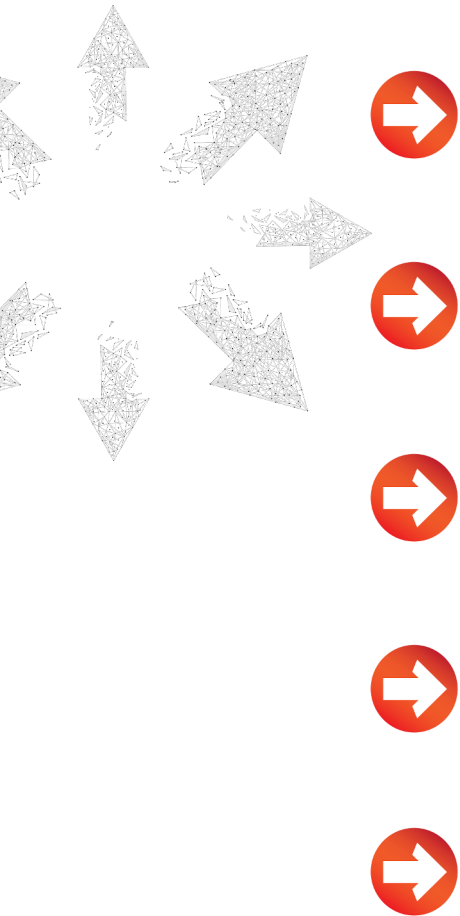
### DECEMBER

- | LAST WEEK OF THE MONTH, UPDATE THE STATEWIDE CALENDAR WITH YOUR EVENTS FOR NEXT MONTH.
  - |SHARE ANY FEEDBACK YOU HAVE FOR THE UPCOMING BOARD MEETING.





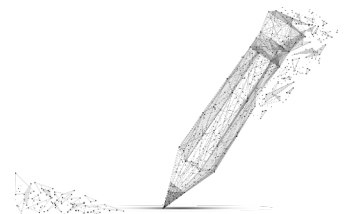
## NOTES TO REMEMBER





NOTES  
*to*  
REMEMBER

NOTES TO REMEMBER



# THANK YOU

TO ALL WHO PARTNER WITH MPSEOC TO HELP STUDENTS & EDUCATION TOGETHER

1,000'S OF STUDENTS, COUNSELORS, PARENTS, AND BEYOND! | A.T. STILL UNIVERSITY | AANIIH NAKODA COLLEGE | ABSAROKEE HIGH SCHOOL | ACADEMY OF INTERACTIVE ENTERTAINMENT | ACE / NATIONAL COUNCIL | ACT | ALBERTON HIGH SCHOOL | AMERICAN INDIAN COLLEGE FUND | ANACONDA HIGH SCHOOL | ARLEE HIGH SCHOOL | AUGUSTA HIGH SCHOOL | BAINVILLE HIGH SCHOOL | BAKER HIGH SCHOOL | BEARTOOTH MOUNTAIN CHRISTIAN MINISTRIES | BEAVERHEAD CO. HIGH SCHOOL | BELFRY HIGH SCHOOL | BELGRADE HIGH SCHOOL | BELT VALLEY HIGH SCHOOL | BIG FLAT ELECTRIC COOPERATIVE | BIG SANDY HIGH SCHOOL | BIG SKY HIGH SCHOOL | BIGFORK HIGH SCHOOL | BILLINGS CAREER CENTER / HIGH SCHOOL | BILLINGS CENTRAL CATHOLIC HIGH SCHOOL | BILLINGS CHRISTIAN SCHOOL | BILLINGS CLINIC | BILLINGS SENIOR HIGH SCHOOL | BILLINGS SKYVIEW HIGH SCHOOL | BILLINGS WEST HIGH SCHOOL | BLACK HILLS STATE UNIVERSITY | BLACKFEET COMMUNITY COLLEGE | BOISE STATE UNIVERSITY | BOX ELDER HIGH SCHOOL | BOZEMAN HIGH SCHOOL | BRIDGER HIGH SCHOOL | BROADVIEW HIGH SCHOOL | BROADWATER HIGH SCHOOL | BROCKTON HIGH SCHOOL | BROWNING HIGH SCHOOL | BUREAU OF LAND MANAGEMENT | BUREAU OF LAND MANAGEMENT | BUTTE CENTRAL CATHOLIC HIGH SCHOOL | BUTTE HIGH SCHOOL | C.M. RUSSELL HIGH SCHOOL | CAMPUS COMPACT / AMERICORPS | CARROLL COLLEGE | CARROLL COLLEGE | CARTER COUNTY HIGH SCHOOL | CASCADE HIGH SCHOOL | CENTERVILLE HIGH SCHOOL | CENTRAL ALTERNATIVE HIGH SCHOOL | CHADRON STATE COLLEGE | CHARLO HIGH SCHOOL | CHESTER-JOPLIN-INVERNESS HIGH SCHOOL | CHIEF DULL KNIFE COLLEGE | CHINOOK HIGH SCHOOL | CHOTEAU HIGH SCHOOL | CIRCLE HIGH SCHOOL | CITY COLLEGE - MSUB | CITY COLLEGE MSU BILLINGS | CITY COLLEGE OF MSU BILLINGS | COLLEGE APPLICATION WEEK | COLLEGE OF SOUTHERN IDAHO | COLSTRIP HIGH SCHOOL | COLUMBIA FALLS HIGH SCHOOL | COLUMBUS HIGH SCHOOL | CONRAD HIGH SCHOOL | CORVALLIS HIGH SCHOOL | CULBERTSON HIGH SCHOOL | CUSTER COUNTY DISTRICT HIGH SCHOOL | CUSTER HIGH SCHOOL | CUT BANK HIGH SCHOOL | DAKOTA COLLEGE AT BOTTINEAU | DARBY HIGH SCHOOL | DAWSON COMMUNITY COLLEGE | DAWSON COUNTY HIGH SCHOOL | DENTON HIGH SCHOOL | DEPARTMENT OF CORRECTIONS - STATE OF MONTANA | DEPARTMENT OF PUBLIC HEALTH AND HUMAN SERVICES | DICKINSON STATE UNIVERSITY | DODSON HIGH SCHOOL | DRUMMOND HIGH SCHOOL | DUAL CREDIT | DUTTON/BRADY HIGH SCHOOL | EASTERN OREGON UNIVERSITY | EASTERN WASHINGTON UNIVERSITY | EASTERN WYOMING COLLEGE | EDMONDS COMMUNITY COLLEGE | EDUCATIONAL TALENT SEARCH, OFFICE OF THE COMMISSIONER OF HIGHER EDUCATION | ENNIS HIGH SCHOOL | EVANS HAIRSTYLING COLLEGE | FAIRFIELD HIGH SCHOOL | FAIRVIEW HIGH SCHOOL | FERGUS HIGH SCHOOL | FLATHEAD HIGH SCHOOL | FLATHEAD VALLEY COMMUNITY COLLEGE | FLORENCE-CARLTON HIGH SCHOOL | FOOTHILLS COMMUNITY CHRISTIAN SCHOOL | FORSYTH HIGH SCHOOL | FORT BENTON HIGH SCHOOL | FORT PECK COMMUNITY COLLEGE | FRAZER HIGH SCHOOL | FRENCHTOWN HIGH SCHOOL | FROID HIGH SCHOOL | FROMBERG HIGH SCHOOL | GALLATIN COLLEGE | GARDINER HIGH SCHOOL | GARFIELD COUNTY DISTRICT HIGH SCHOOL | GEAR UP | GERALDINE HIGH SCHOOL | GEYSER HIGH SCHOOL | GILLETTE COLLEGE | GLACIER HIGH SCHOOL | GLASGOW SENIOR HIGH SCHOOL | GRAND CANYON UNIVERSITY | GRANITE COUNTY HIGH SCHOOL | GRASS RANGE HIGH SCHOOL | GREAT FALLS CENTRAL CATHOLIC HIGH SCHOOL | GREAT FALLS COLLEGE MONTANA STATE UNIVERSITY | GREAT FALLS COLLEGE MSU | GREAT FALLS HIGH SCHOOL | HAMILTON HIGH SCHOOL | HARDIN HIGH SCHOOL | HARLEM HIGH SCHOOL | HARLOWTON HIGH SCHOOL | HARRISON HIGH SCHOOL | HAVRE HIGH SCHOOL | HAYS-LODGE POLE HIGH SCHOOL | HEALTHCARE MONTANA | HEART BUTTE HIGH SCHOOL | HELENA CAPITAL HIGH SCHOOL | HELENA CHRISTIAN SCHOOL | HELENA COLLEGE | HELENA COLLEGE UNIVERSITY OF MONTANA | HELENA HIGH SCHOOL | HELLGATE HIGH SCHOOL | HERITAGE BAPTIST SCHOOL | HIGHLANDS COLLEGE | HIGHWOOD HIGH SCHOOL | HINSDALE HIGH SCHOOL | HOBSON HIGH SCHOOL | HOT SPRINGS HIGH SCHOOL | HUNTLEY PROJECT HIGH SCHOOL | HYSHAM HIGH SCHOOL | INDEPENDENCE BANK | JEFFERSON COUNTY HIGH SCHOOL | JOLIET HIGH SCHOOL | JUDITH GAP HIGH SCHOOL | LAMBERT HIGH SCHOOL | LAME DEER HIGH SCHOOL | LARAMIE COUNTY COMMUNITY COLLEGE | LAUREL HIGH SCHOOL | LAVINA HIGH SCHOOL | LEWIS AND CLARK LAW SCHOOL | LEWIS-CLARK STATE COLLEGE | LIBBY HIGH SCHOOL | LIMA HIGH SCHOOL | LINCOLN COLLEGE OF TECHNOLOGY | LINCOLN COUNTY HIGH SCHOOL | LINCOLN HIGH SCHOOL | LINDERMAN EDUCATION CENTER | LINFIELD COLLEGE | LITTLE BIG HORN COLLEGE | LODGE GRASS HIGH SCHOOL | LONE PEAK HIGH SCHOOL | LOYOLA SACRED HEART HIGH SCHOOL | LUSTRE CHRISTIAN HIGH SCHOOL | MACRAO | MALTA HIGH SCHOOL | MANHATTAN CHRISTIAN SCHOOL | MANHATTAN HIGH SCHOOL | MASFAA | MEDICINE LAKE HIGH SCHOOL | MELSTONE HIGH SCHOOL | MILES COMMUNITY COLLEGE | MINOT STATE UNIVERSITY | MISSOULA COLLEGE UM | MONTANA ACADEMY / HIGH SCHOOL | MONTANA ACADEMY OF SALONS | MONTANA AHEC | MONTANA AHEC/HEALTHCARE MT | MONTANA AIR NATIONAL GUARD | MONTANA ARMY NATIONAL GUARD | MONTANA BIBLE COLLEGE | MONTANA COLLEGE ACCESS NETWORK | MONTANA CONSERVATION CORPS | MONTANA DEPARTMENT OF LABOR & INDUSTRY | MONTANA DEPARTMENT OF TRANSPORTATION | MONTANA DPHHS PRIMARY CARE OFFICE | MONTANA HIGHWAY PATROL | MONTANA OFFICE OF PUBLIC INSTRUCTION | MONTANA OFFICE OF PUBLIC INSTRUCTION | REGISTERED APPRENTICESHIP PROGRAM & JOB SERVICE | MONTANA SCHOOL COUNSELORS ASSOCIATION | MONTANA SCHOOL FOR THE DEAF AND BLIND / HIGH SCHOOL | MONTANA STATE UNIVERSITY | MONTANA STATE UNIVERSITY BILLINGS | MONTANA STATE UNIVERSITY NORTHERN | MONTANA STATE UNIVERSITY-NORTHERN | MONTANA TECH | MONTANA TECH TRIO | MONTANA TECHNOLOGICAL UNIVERSITY | MONTANA UNIVERSITY SYSTEM | MONTANA UNIVERSITY SYSTEM - STUDENT FINANCIAL SERVICES | MONTANA YOUTH CHALLENGE ACADEMY | MOORE HIGH SCHOOL | MPSEOC | MONTANA COLLEGES | MTC - JOB CORPS | NAME OF INSTITUTION | NASHUA HIGH SCHOOL | NATURAL RESOURCES CONSERVATION SERVICE | NATURAL RESOURCES CONSERVATION SERVICE- USDA | NORTH DAKOTA STATE UNIVERSITY | NORTH STAR HIGH SCHOOL | NORTH TOOLE COUNTY HIGH SCHOOL | NORTHERN ARIZONA UNIVERSITY | NORTHERN CHEYENNE TRIBAL SCHOOL | NORTHWEST COLLEGE | NOXON HIGH SCHOOL | OLDS COLLEGE | OPHEIM HIGH SCHOOL | OREGON COAST CULINARY INSTITUTE | PARIS GIBSON EDUCATION CENTER | PARK CITY HIGH SCHOOL | PARK HIGH SCHOOL | PERRY TECHNICAL INSTITUTE | PINE HILLS YOUTH CORRECTIONAL FACILITY / HIGH SCHOOL | PLAINS HIGH SCHOOL | PLANNED PARENTHOOD OF MONTANA | PLENTY COUPS HIGH SCHOOL | PLENTYWOOD HIGH SCHOOL | PLEVNA HIGH SCHOOL | PNACAC | POLSON HIGH SCHOOL | POPLAR HIGH SCHOOL | POWDER RIVER COUNTY DISTRICT HIGH SCHOOL (PRCDHS) | POWELL COUNTY HIGH SCHOOL | POWER HIGH SCHOOL | PROJECT FOR ALTERNATIVE LEARNING | RAPELJE HIGH SCHOOL | REACH HIGHER MONTANA | RED LODGE HIGH SCHOOL | REED POINT HIGH SCHOOL | REO RURAL EMPLOYMENT OPPORTUNITIES | RICHEY HIGH SCHOOL | ROBERTS HIGH SCHOOL | ROCKY BOY HIGH SCHOOL | ROCKY MOUNTAIN COLLEGE | ROCKY MOUNTAIN SCHOOL OF PHOTOGRAPHY | RONAN HIGH SCHOOL | ROSEBUD HIGH SCHOOL | ROUNDUP HIGH SCHOOL | ROY HIGH SCHOOL | RYEGATE HIGH SCHOOL | SACO HIGH SCHOOL | SALISH KOOTENAI COLLEGE | SAVAGE HIGH SCHOOL | SAVANNAH COLLEGE OF ART AND DESIGN | SCOBAY HIGH SCHOOL | SEELEY-SWAN HIGH SCHOOL | SENTINEL HIGH SCHOOL | SHELBY HIGH SCHOOL | SHEPHERD HIGH SCHOOL | SHERIDAN COLLEGE | SHERIDAN HIGH SCHOOL | SHIELDS VALLEY HIGH SCHOOL | SIDNEY HIGH SCHOOL | SIMMS HIGH SCHOOL | ST. ANDREW SCHOOL | ST. IGNATIUS HIGH SCHOOL | ST. LABRE HIGH SCHOOL | ST. REGIS HIGH SCHOOL | STANFORD HIGH SCHOOL | STEVENSVILLE HIGH SCHOOL | STILLWATER CHRISTIAN HIGH SCHOOL | STONE CHILD COLLEGE | SUMMIT PREPARATORY SCHOOL | SUPERIOR HIGH SCHOOL | SWEET GRASS COUNTY HIGH SCHOOL | TALENT SEARCH | TERRY HIGH SCHOOL | THE COLLEGE BOARD | THE SAVANNAH COLLEGE OF ART AND DESIGN | THOMPSON FALLS HIGH SCHOOL | THREE FORKS HIGH SCHOOL | TREASURE VALLEY COMMUNITY COLLEGE | TRIO | TROY HIGH SCHOOL | TURNER HIGH SCHOOL | TWIN BRIDGES HIGH SCHOOL | TWO EAGLE RIVER HIGH SCHOOL | U.S. DEPARTMENT OF STATE | UNIVERSITY OF MARY | UNIVERSITY OF MARY | UNIVERSITY OF MONTANA | UNIVERSITY OF MONTANA WESTERN | UNIVERSITY OF MONTANA WESTERN | UNIVERSITY OF NORTH DAKOTA | UNIVERSITY OF OREGON | UNIVERSITY OF PROVIDENCE | UNIVERSITY OF PUGET SOUND | UNIVERSITY OF WASHINGTON | UNIVERSITY OF WYOMING | US CUSTOMS AND BORDER PROTECTION | US. AIR FORCE | USDA ARS NORTHERN PLAINS AGRICULTURAL RESEARCH LAB | USDA-NRCS MT | VALIER HIGH SCHOOL | VALLEY CHRISTIAN SCHOOL | VICTOR HIGH SCHOOL | WALLA WALLA UNIVERSITY | WALLA WALLA UNIVERSITY - BILLINGS PROGRAM | WEST YELLOWSTONE HIGH SCHOOL | WESTBY HIGH SCHOOL | WESTERN DAKOTA TECH | WHITE SULPHUR SPRINGS HIGH SCHOOL | WHITEFISH HIGH SCHOOL | WHITEFISH INDEPENDENT | WHITEHALL HIGH SCHOOL | WHITEWATER HIGH SCHOOL | WHITMAN COLLEGE | WIBAUX HIGH SCHOOL | WILLAMETTE UNIVERSITY | WILLARD ALTERNATIVE HIGH SCHOOL | WILLISTON STATE COLLEGE | WILLOW CREEK HIGH SCHOOL | WINIFRED HIGH SCHOOL | WINNETT HIGH SCHOOL | WOLF POINT HIGH SCHOOL | WYOTECH | YELLOWSTONE ACADEMY / HIGH SCHOOL

...AND MANY MORE! WE HOPE TO WORK WITH YOU IN THE YEAR AHEAD IN HELPING STUDENTS AND EDUCATION TOGETHER!

\*TAKEN FROM RECENT MPSEOC EVENTS.

**MPSEOC | MONTANA COLLEGES**

MONTANA POST SECONDARY EDUCATIONAL OPPORTUNITIES COUNCIL

PO BOX 7548 | MISSOULA | MONTANA | 59807

MONTANACOLLEGES.com | MPSEOC.org

