



| 2021-2022 Promotions Overview |

GEAR UP / MUS Team, a very special thank you for your partnership & teamwork to help our Montana students together!

Helping Students Together

REPORT CONTENTS

2021-2022 Promotions | Year In Review

- 1 WEB PROMOTIONS
- 2 MONTANA GUIDE TO HIGHER EDUCATION
- 3 FALL FAIRS, COUNSELOR UPDATE, SPRING FAIRS, MT TRIBAL COLLEGE INSTITUTE, & VIRTUAL EVENTS
- 4 PRESS RELEASE & MEDIA PROMOTIONS
- 5 ADDITIONAL PROMOTIONS & EVENTS | SUMMER CONFERENCE, FAIRS, SOCIAL MEDIA POSTS, EVENT PROMOTIONS, & MORE! See separate file for this larger document of photos and promotions.

**Many photos included in a separate file. Feel free to use any photos.*

**Student data shared in a separate email link.*

Special Thanks To MUS / GEAR UP!



Thank you so much,
GEAR UP TEAM!

WE "GEAR UP" MUS

Thank you very much.

Thank you for all you do.
Austin - Rocky

GREAT
JOB,
GEAR
UP!!

Thank you for your partnership and support.
Emily - University of Montana

We are so grateful
to team with you
to help students!

Thank you so much!
Coke

Thank you!
-Amy
MISSOURI
DUNN
OFF MSU

Thanks for all you do!
Christy Stokes, UMN

THANKS FOR ALL
YOUR SUPPORT!
OF STUDENTS!
MIKE - MSU



Thank you!

I Cannot Express My Gratitude for All that you do for all native students Throughout Indian Country! Your Partnership is Truly Amazing and I Look Forward to Working Together for Many Years to Come!

Best Wishes,

Angie D
Chief MilkWife College

MPSEOC.ORG | MONTANACOLLEGES.COM
Montana Post Secondary Educational Opportunities Council





Partners 40w
Watch full reel >



0:25

Partner & Sponsor Highlight

thank you



Your support helps make our events, programming, and services possible for all Montana students.



montanacolleges

Always happy to work with @montanagearup

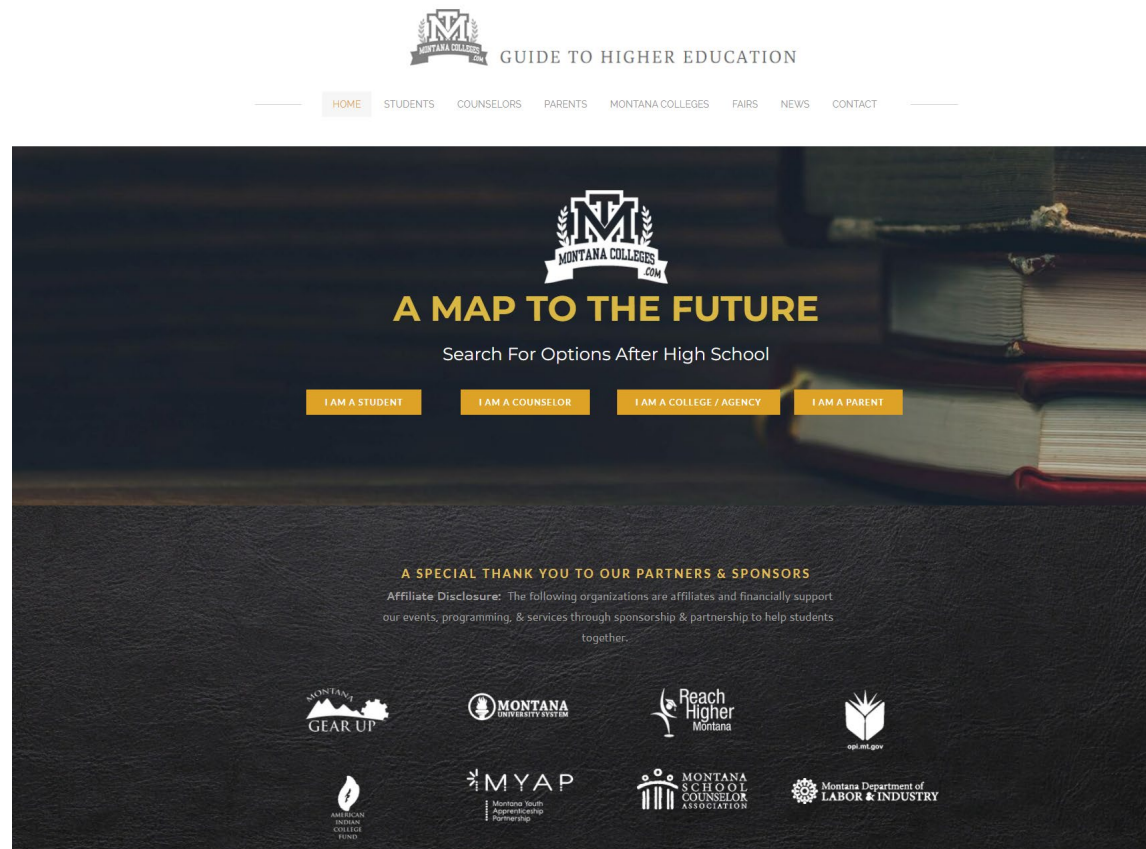


2021-2022 Promotions | Overview

YEAR IN REVIEW

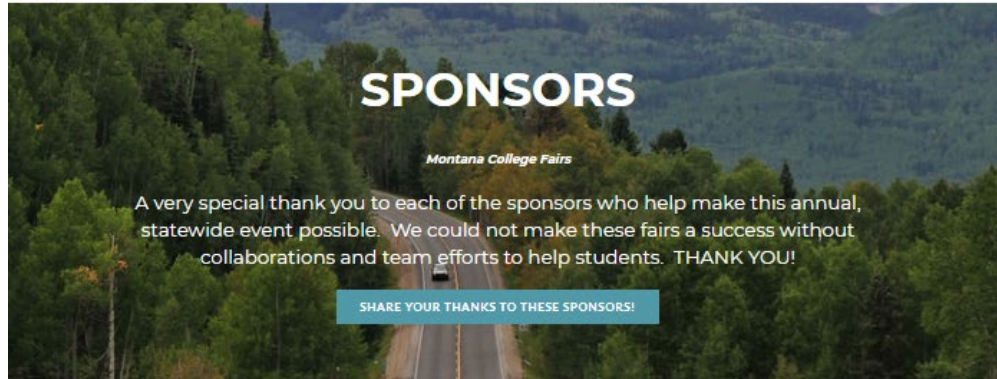
1 WEB PROMOTIONS

- All year promotion and your website linked on the following sites:
 - www.MontanaColleges.com
 - www.MontanaCollegeFairs.com
 - www.MontanaTribalColleges.org
 - www.SupportMontanaStudents.org
 - Also, any special web promotions for events and online forms included a special promotion of your support and collaboration.



MONTANA COLLEGE FAIRS | MPSEOC

WELCOME | MONTANA VIRTUAL COLLEGE FAIR | OCTOBER VIRTUAL EVENT | CONTACT US



ALL SPONSORS

More coming soon! A very special thank you to all our Sponsors and Partners who help make these events possible!



SUPPORT STUDENTS | EDUCATION

[JOIN THE CELEBRATION](#) | [HOW IT WORKS?](#) | [WEAR COLLEGE GEAR](#) | [SHARE ON SOCIAL MEDIA](#) | [SHARE PICTURES](#) | [SCHOLARSHIPS](#)

THANK YOU!

A very special thank you to each of the sponsors and partners who help make MPSEOC statewide events possible. We could not make these fairs, student events, and this celebration of "Montana College Pride and Student Support" a success without these collaborations and team efforts to help students. THANK YOU!

[JOIN THE TEAM | BECOME A PARTNER](#)

MPSEOC PARTNERS AND SPONSORS

A very special thank you to these amazing organizations and institutions. We simply could not offer the programs we do without your team efforts to help students! THANK YOU!





PARTNERS & SPONSORS

A VERY SPECIAL THANK YOU TO ALL THE PARTNERS & SPONSORS WHO HELP SUPPORT THIS TEAM!

TOGETHER HELPING STUDENTS

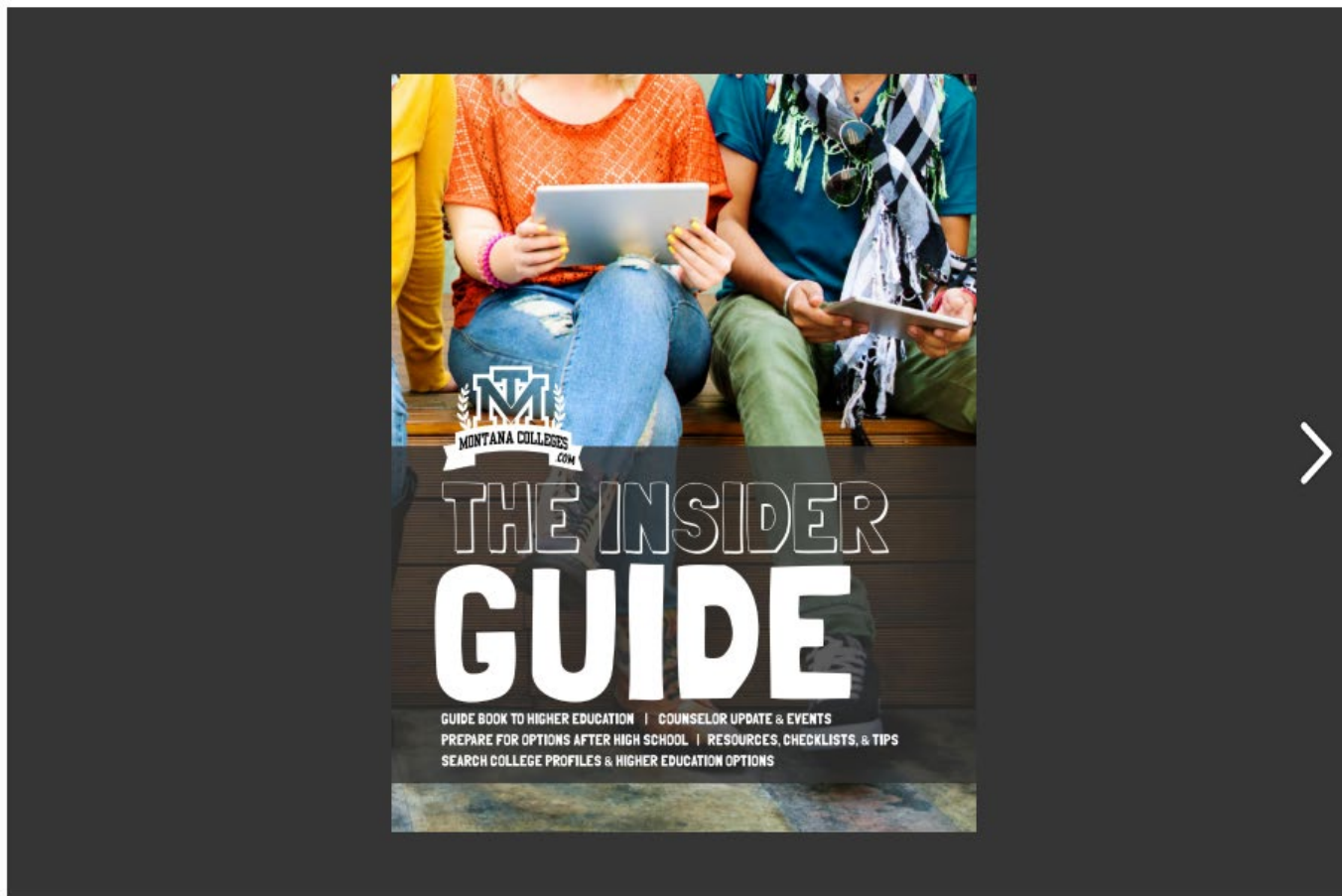


2021-2022 Promotions | Overview

Thank you for your partnership!

2 MONTANA GUIDE TO HIGHER EDUCATION

GUIDEBOOK TO HIGHER EDUCATION



STUDENT & COUNSELOR RESOURCES

FINANCIAL AID & SCHOLARSHIP RESOURCES
 CAREER EXPLORATION RESOURCES
 FIRST GENERATION RESOURCES
 GEAR UP, TRIO, TALENT SEARCH, & UPWARD BOUND RESOURCES
 FOSTER CARE RESOURCES
 HOMELESS YOUTH RESOURCES
 MENTAL HEALTH RESOURCES
 & MORE

SELECTION CRITERIA

Checklist

- 1. Do you have a clear understanding of the college's selection criteria?
- 2. Do you have a clear understanding of the college's selection criteria?
- 3. Do you have a clear understanding of the college's selection criteria?
- 4. Do you have a clear understanding of the college's selection criteria?
- 5. Do you have a clear understanding of the college's selection criteria?
- 6. Do you have a clear understanding of the college's selection criteria?
- 7. Do you have a clear understanding of the college's selection criteria?
- 8. Do you have a clear understanding of the college's selection criteria?

Learn More

Read More

SELECTION CRITERIA

Learn

Learn More

Read More

COMPARISON CHECKLIST

GENERAL INFORMATION

- College Name
- College Address
- College Phone
- College Website
- College Email
- College Fax
- College Mailing Address

SELECTOR 1

SELECTOR 2

SELECTOR 3

WHAT ARE YOUR INTERESTS?

WORD

NUMERICAL

ART

SCIENCE

SPORTS

TECHNOLOGY

ENGLISH

LANGUAGE

MUSIC

PEOPLE

PICTURE

WHAT ARE YOUR INTERESTS?

WHAT ARE YOUR INTERESTS?

WHAT ARE YOUR INTERESTS?

WHAT ARE YOUR INTERESTS?

WHAT ARE YOUR INTERESTS?

WORD

NUMERICAL

ART

SCIENCE

SPORTS

TECHNOLOGY

ENGLISH

LANGUAGE

MUSIC

PEOPLE

PICTURE

WHAT ARE YOUR INTERESTS?


WHAT ARE YOUR INTERESTS?

WHAT ARE YOUR INTERESTS?

WHAT ARE YOUR INTERESTS?


Press **Esc** to exit full screen

READ MORE ⁴ SHARE



IMPORTANT MONTANA ANNOUNCEMENTS

We are excited to bring you updates & presentations from our following Montana agencies & organizations. A big thank you to each of them for their support of this event!




80-81 / 169

80 81

+ ⓘ issue 🔍 ⌵

↓
READ MORE ⁴ SHARE

Montana GEAR UP




560 N. Park Ave.
PO Box 203201
Helena, Montana 59620-3201
mus.edu/gearup

ABOUT : **Mission:**
Montana GEAR UP believes that post secondary education is possible for all Montana students, regardless of economic background. Montana GEAR UP supports schools, students, and their families to increase students' college and career readiness through academic preparedness, post secondary planning, and financial aid knowledge so that they may succeed in their education beyond high school.

Vision:
Montana GEAR UP will be the model for elevating the potential of all students to pursue post-secondary success.

Quick Facts

- Serves Students in 7-12th grades at 18 middle schools and their receiving high schools to improve high school graduation and college enrollment rates.
- Partners with post secondary institutions to support GEAR UP college freshman with their transition to and retention in college.
- Will serve 8,800 students, including 5,800 American Indian Students, by the end of the grant.



2022-2023 MONTANA ARC OF EVENTS


- OCTOBER 3-14** COLLEGE APPLICATION WEEK(S)
Apply to Montana Colleges and Universities for FREE
- OCTOBER 1-31** FAFSA COMPLETION MONTH
Complete for FREE at FAFSA.GOV
- MARCH/APRIL 31/1-7** Complete Application Process (CAP)
Complete College Applications and the FAFSA
- MAY 1-5** DECISION DAY
Celebrate your plans for after high school

COLLEGE ACCESS
Working to ensure all Montana students have an equal opportunity to attend and succeed in college.

Resources

College Exploration
Career Exploration
Financial Aid
Scholarships
Resources for Parents
Resources for Counselors
Resources for Students & More!

Visit us online @
www.mus.edu/gearup



GEAR UP TUTORING JUST GOT AN UPGRADE!

86-87 / 169
+
Ⓜ
🔍
⌵

↓
Press Esc to exit full screen
READ MORE ⁸ SHARE

Montana University System

applymontana@montana.edu
 (406) 449-9124
 mus.edu
 applymontana.mus.edu

SERVICES OFFERED: College & Career Exploration, Financial Aid, Scholarships, Resources for Parents, Counselors, and Students

ABOUT : The Montana University System offers hundreds of unique programs which allow you flexibility to explore your interests and find programs and degrees that are suited for every kind of learner.

The Montana University System (MUS) is comprised of sixteen public universities and colleges, enrolling more than 40,000 students each semester. This website is designed to provide students, parents, and the public easy access to critical information about enrolling and succeeding in the Montana University System, such as, information on preparing for college, financial aid, transfer of credits, and distance learning.

Discover What's Out There

How does education fit into your future? We'll help you find out.

40,000+
students
16
colleges
1
application

What best describes you?

High School Student	+	Parents	+
Adult Learner	+	School Counselor	+

Where Education Creates Outcomes

Higher learning can advance your career — and support your lifestyle. Find the best fit for you.

Resources

- College Exploration
- Career Exploration
- Financial Aid
- Scholarships
- Resources for Parents
- Resources for Counselors
- Resources for Students & More!


Visit us online @
www.mus.edu

88-89 / 169
⊕ ⓘ 🔍 ↻

Press **Esc** to exit full screen

READ MORE ⁴ SHARE

MASFAA & Financial Aid



masfaaonline.org

ABOUT : The Montana Association of Student Financial Aid Administrators (MASFAA) is an organization serving the needs of students, institutions of higher education, government agencies, and private funding sources through the coordination of plans and programs for student financial aid.


In addition, MASFAA assists with communications between institutions of post-secondary education and sponsors of student financial aid.

The Association serves as the State forum and acts as the focus for the expression of views on matters relating to the development, funding, and administration of student financial aid at the state, regional, and national levels.


Share your feedback with us!




Tell us what you would like to see for support in Financial Aid / FASAA / etc. We are here to help! Tell us what you would like at the survey on the next page. Thank you!

FAFSA Completion Survey



Share your thoughts



Resources
 Financial Aid
 Scholarships
 Resources for Colleges
 Resources for Counselors
 Resources for Students & More!

Visit us online @
MASFAAOnline.org

84

84-85 / 169

+ issue 🔍 ⌵

READ MORE ⁴ SHARE

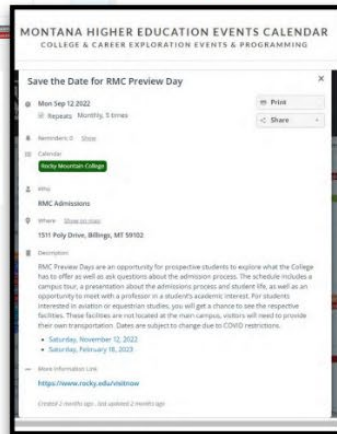
CALENDAR OF MONTANA COLLEGE & CAREER EVENTS



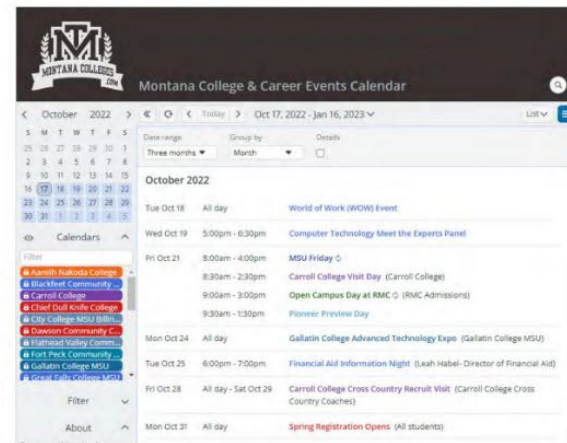
- 1 location for Montana College & Career events!
- All 25 Montana Colleges & Universities have a profile to post events and resources!
- Many statewide agencies have access to post and share events.



- Click on each posting and preview details about each event.



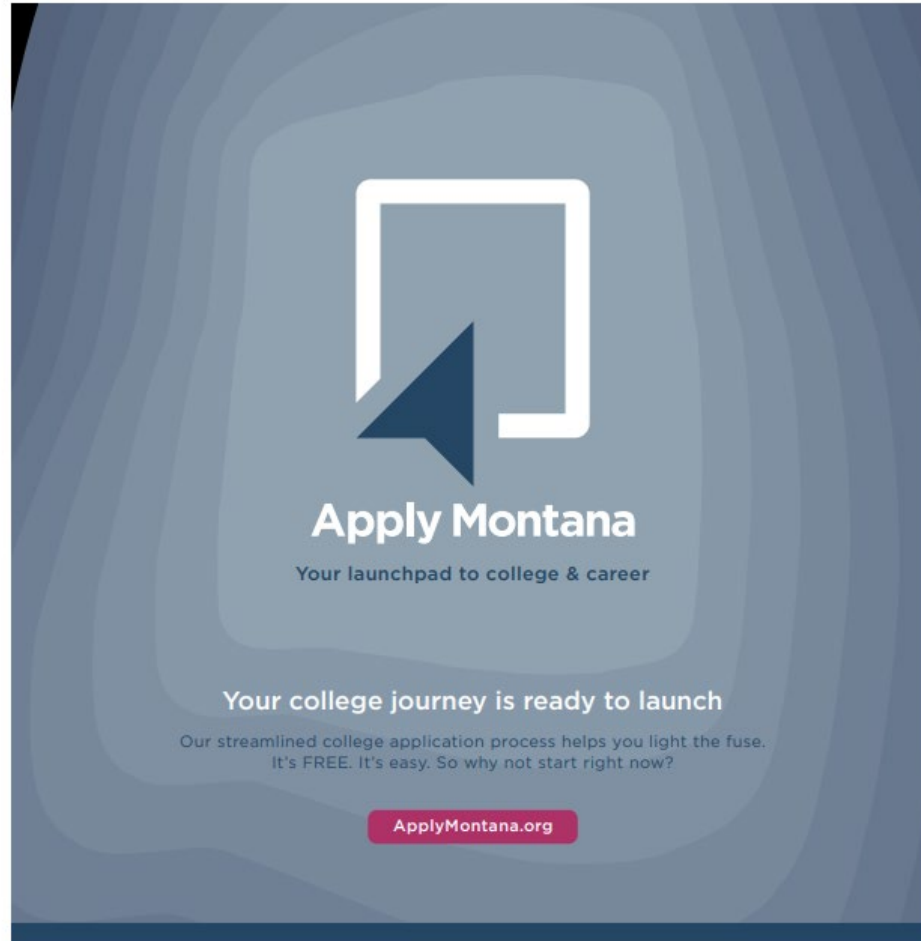
- Choose the preview calendar you like best or an overall listing!
- Print the week's or month's events and share with your students!
- Share events with MPSEOC, and we will post them for all to see. Free to share student college & career resources in one place.



Located @ www.MontanaColleges.com/calendar

106

107





A VERY SPECIAL THANK YOU

Thank you to our sponsors and partners for all their support and collaboration! We simply could not offer these programs, events, and services without their amazing team efforts and commitment to students and Montana education.

WORKING TOGETHER TO HELP STUDENTS!

MONTANA COLLEGES & UNIVERSITIES

MONTANA COUNSELORS

GEAR UP

www.MUS.edu/GEARUP

MONTANA UNIVERSITY SYSTEM

www.MUS.edu

OFFICE OF PUBLIC INSTRUCTION

www.OPI.MT.gov

REACH HIGHER MONTANA

www.ReachHigherMontana.org

AMERICAN INDIAN COLLEGE FUND

www.CollegeFund.org

MONTANA ASSOCIATION OF STUDENT FINANCIAL AID ADMINISTRATORS—MASFAA

www.MASFAAOnline.org

MONTANA DEPARTMENT OF LABOR & INDUSTRY / MCIS

lmi.mt.gov/Career/Programs



**MONTANA COLLEGE
ATTAINMENT
NETWORK | MCAN**

Missoula,

Type: Agency

<http://mtcollegeaccess.org/>

(406) 496-4289

MORE INFO



**GEAR UP
MONTANA GEAR UP |
OFFICE OF THE
COMMISSIONER OF
HIGHER EDUCATION**

Helena, MT

Type: Agency

<https://mus.edu/gearup/>

(406) 449-9144

MORE INFO



**MONTANA HIGHWAY
PATROL**

Helena, MT

Type: Agency

www.DOTMT.gov/HighwayPatrol

(406) 444-3825

MORE INFO



**MONTANA LEGAL
SERVICES
ASSOCIATION**

Helena, MT

Type: Agency

<http://www.justiceformontanans.org>

(406) 442-9830

MORE INFO



**MONTANA POST
SECONDARY
EDUCATIONAL
OPPORTUNITIES
COUNCIL | MPSEOC**

Missoula, MT

Type: Agency

<http://www.MontanaColleges.com>

(406) 531-3531

MORE INFO



**MONTANA
UNIVERSITY SYSTEM
| OFFICE OF THE
COMMISSIONER OF
HIGHER EDUCATION**

Helena, MT

Type: Agency

<https://mus.edu/>

(800) 537-7508

MORE INFO



**MONTANA YOUTH
CHALLENGE ACADEMY**

Dillon, MT

Type: Special Purpose

School | HiSET Options
School

Enrollment: 3216

<http://www.mycacademy.org>

(877) 367-6927

MORE INFO



**NDSU NURSING AT
SANFORD HEALTH**

Bismarck, ND

Type: Public 4-Year

Enrollment: 211

<https://www.ndsu.edu/nursing/about/#c>

(701) 224-3804

MORE INFO



**NORTH CENTRAL
MONTANA AHEC**

Helena, MT

Type: Agency



**NORTH DAKOTA
STATE UNIVERSITY**



**NORTHERN ARIZONA
UNIVERSITY**

Flagstaff, AZ

Type: Public 4-Year

Enrollment: 30736



**NORTHWEST
COLLEGE**

Powell, WY

Type: Public 2-Year

Community College

Enrollment: 1356

<http://www.nwc.edu>

(307) 754-6101

2021-2022 Promotions | Overview

Thank you for your partnership!

3 FALL FAIRS, COUNSELOR UPDATE, SPRING FAIRS, MT TRIBAL COLLEGE INSTITUTE, & VIRTUAL EVENTS

MONTANA

FALL COLLEGE & CAREER FAIRS

SCHEDULE OF EVENTS | SEPTEMBER 2022

*PENDING COVID DEVELOPMENTS | *WE WILL SHARE ANY UPDATES TO THIS SCHEDULE IN THE LIVE SAFETY FORM @ MONTANACOLLEGES.COM

EASTERN REGION

DAY DATE	TIME	TBA - *Pending COVID Developments HOST INSTITUTION, CITY LOCATION
Monday September 12	12:30 p.m. – 2:30 p.m.	MSU-Northern, Havre College Gym
Tuesday September 13	9:00 a.m. – 10:30 a.m.	Glasgow High School, Glasgow High School Gym
Wednesday September 14	9:00 a.m. – 10:30 a.m.	Sidney High School, Sidney High School Gym
Wednesday September 14	1:00 p.m. – 2:30 p.m.	Dawson Community College, Glendive College Gym
Thursday September 15	8:00 a.m. – 9:30 a.m.	Miles Community College, Miles City College Gym
Thursday September 15	1:00 p.m. – 2:30 p.m.	Colstrip High School, Colstrip High School Gym

CENTRAL REGION

DAY DATE	TIME	TBA - *Pending COVID Developments HOST INSTITUTION, CITY LOCATION
Monday September 19	9:15 a.m. – 10:45 a.m.	Montana State University, Bozeman Strand Union Ballrooms
Monday September 19	1:30 p.m. – 3:00 p.m.	Park Senior High School, Livingston High School Gym
Tuesday September 20	8:30 a.m. – 11:30 a.m.	MSU Billings, Billings College Gym
Wednesday September 21	9:30 a.m. – 11:00 a.m.	Fergus County High School, Lewistown Fairgrounds
Thursday September 22	9:00 a.m. – 11:00 a.m.	University of Providence, Great Falls, College Gym
Thursday September 22	1:30 p.m. – 3:00 p.m.	NEW! Conrad High School High School Gym

WESTERN REGION

DAY DATE	TIME	TBA - *Pending COVID Developments HOST INSTITUTION, CITY LOCATION
Monday September 26	9:00 a.m. – 11:00 a.m.	Montana Tech, Butte College Gym
Monday September 26	1:30 p.m. – 3:00 p.m.	Carroll College, Helena Hunthausen Activity Center
Tuesday September 27	8:45 a.m. – 11:15 a.m.	The University of Montana, Missoula University Center Ballroom
Tuesday September 27	1:30 p.m. – 3:00 p.m.	Hamilton and Corvallis High Schools, Hamilton High School Gym
Wednesday September 28	10:00 a.m. – 11:30 a.m.	Polson High School, Polson High School Gym
Thursday September 29	8:15 a.m. – 11:30 a.m.	Flathead High School, Kalispell High School Gym



↓

READ MORE ⁴ SHARE

MONTANA COLLEGES .COM

HELPING KEEP MONTANA EDUCATION CONNECTED

MONTANA COUNSELOR UPDATE

FALL 2022

MONTANA'S COLLEGES, UNIVERSITIES, AGENCIES, & MORE SHARE ANNUAL UPDATES

MAJOR ANNOUNCEMENTS

ADMISSIONS | FINANCIAL AID | SCHOLARSHIPS | NEW ACADEMIC PROGRAMS | WHAT'S NEW ON CAMPUS

4

4-5 / 169

+ @issuu 🔍 ↗

↓

READ MORE ⁴ SHARE

MPSEOC MONTANA COUNSELOR UPDATE AGENDA

WEDNESDAY | OCTOBER 26, 2022
10:00AM - 3:30PM*

MONTANA 4-YEAR PUBLIC & PRIVATE COLLEGES
MONTANA TRIBAL COLLEGES
MONTANA 2-YEAR PUBLIC & COMMUNITY COLLEGES
MONTANA AGENCIES & MAJOR ANNOUNCEMENTS

**We will take a mid-morning break and a lunch break.*

See www.MontanaColleges.com/update for more details.
*Due to so many presenters, times & details subject to adjust.
Thank you for your understanding.

Thank you for being a part of this statewide event!

6

7

6-7 / 169

+ @ issue 🔍 ⌵



MONTANA COLLEGES OVERVIEW



2-YEAR PUBLIC COLLEGES & COMMUNITY COLLEGES

- CITY COLLEGE OF MSU BILLINGS
- DAWSON COMMUNITY COLLEGE
- FLATHEAD VALLEY COMMUNITY COLLEGE
- GALLATIN COLLEGE MSU
- GREAT FALLS COLLEGE MSU
- HELENA COLLEGE UM
- HIGHLANDS COLLEGE OF MONTANA TECH
- MILES COMMUNITY COLLEGE
- MISSOULA COLLEGE UM

MONTANA TRIBAL COLLEGES

- AANIIH NAKODA COLLEGE
- BLACKFEET COMMUNITY COLLEGE
- CHIEF DULL KNIFE COLLEGE
- FORT PECK COMMUNITY COLLEGE
- LITTLE BIG HORN COLLEGE
- SALISH KOOTENAI COLLEGE
- STONE CHILD COLLEGE

4-YEAR PRIVATE & PUBLIC COLLEGES

- CARROLL COLLEGE
- MONTANA STATE UNIVERSITY
- MONTANA STATE UNIVERSITY BILLINGS
- MONTANA STATE UNIVERSITY NORTHERN
- MONTANA TECHNOLOGICAL UNIVERSITY
- ROCKY MOUNTAIN COLLEGE
- UNIVERSITY OF MONTANA
- UNIVERSITY OF MONTANA WESTERN
- UNIVERSITY OF PROVIDENCE

READ MORE SHARE

MONTANA STATE UNIVERSITY



INSTITUTION OVERVIEW

As Montana's premier flagship university, Montana State University offers something beyond the conventional college experience. The people who live, work and play at MSU aren't afraid to venture from what they know to find a new place, to learn new things. Our researchers are pushing boundaries in their fields to make cutting-edge discoveries. Our professors are empowering students to go beyond the classroom to solve important real-world problems. And our students are making millions of acres of nearby wilderness their classroom, lab spaces and playground. With nearly 16,700 students, 250+ academic options, and nearly 300 clubs and organizations, our campus offers something for everyone. At MSU, you'll create a college experience that's as unique as you are.



BASIC STATS

Type: In-State College / University
 Enrollment: 16,841
 Student-Faculty Ratio: 19:01
 Affiliations:
 Montana University System

COSTS

In-State Tuition By Credit: \$354
 Out-Of-State Cost By Credit: \$1180
 In-State Tuition Cost Per Year: \$2740
 Out-Of-State Cost Per Year: \$27400
 Books & Supplies Per Year: \$1450
 Room & Board Per Year: \$10400
 Application Fee: \$38

ASK US ABOUT OUR FEATURED DEPARTMENTS

Engineering | Nursing | Agriculture

CAREER PATHWAYS OFFERED BY INSTITUTION

- Advanced Manufacturing | • Agricultural Mechanics and Construction | • Agriculture, Food and Natural Resources | • Arts, A/V Technology and Communication | • Business Management | • Design & Construction | • Education | • Finance | • Health Professions | • Hospitality & Tourism | • Human Services | • Information Technology | • Marketing | • STEM | • Transportation | • Welding & Fabrication |
- Other Specialized Programs

ACADEMIC PROGRAMS

- 8 Undergraduate Academic Colleges; Honors College; Graduate College and over 250 different academic programs.
- Agriculture—Land grant school in MT, Biotechnology, Environmental Science, Land Rehab/Land Resources, Equine Science and more. Large endowment for scholarships in this college!
- Arts and Architecture—Architecture (5-year master's), Graphic Design, Film (only National History Filmmaking program in world), Music opportunities for non-major; marching band students get great scholarships; many study abroad opportunities. Hot program is a major in Music Technology. Students will find amazing state of the art equipment and labs in this college.
- Business—Opened in 2016, Jabs Hall, which houses the Jake Jabs College of Business and Entrepreneurship, AACSB accredited (only 5% in the world area). Accounting/CPA pass rate continually towards the top in the nation, popular minor in Entrepreneurship. Students often work with local companies to get business experiences.
- Education, Health and Human Development—Both elementary and secondary teacher preparation, Tech Ed, Exercise Science, Kinesiology, Nutrition/Dietetics, Health Promotion. New early childhood P-3 option and a new gerontology certificate. More than 90% of recent Education grads are employed in field of their choice. Launched new Hospitality Management degree in Fall 2017.
- Engineering—Completed the new \$70 million Adjonson Hall in December 2016 which now houses the Norm Adjonson College of Engineering. Students have pass rate on the Fundamentals of Engineering exam which is 10 points higher than the national average while remaining one of the less than 10 percent of schools that require all graduating students to take the exam. 13 different majors spread across 10 departments.
- Letters and Science—New minor in Global Health. Paleontology and Snow Science two hot programs in Earth Sciences; Japan studies option. Recent MSU medical school applicants were admitted into medical schools at a rate that is 20% higher than the national average. WWAMI medical program is located at MSU. The department of modern languages offers courses in Japanese, Arabic and Mandarin and have many direct exchange programs.
- Nursing—Offering educational opportunities at hospitals in Billings, Bozeman, Great Falls, Kalispell and Missoula;

MSU is the largest supplier of baccalaureate prepared nurses in Montana. The College of Nursing received a gift of \$101 million in the fall of 2021, which will provide student scholarships, new facilities, and a new midwifery degree, ensuring that Nursing graduates will continue to have high NCLEX pass rates, 100% job placement, and rank among the highest paid MSU graduates.

- University Studies—Undecided students comprise approximately 12% of the freshman class this fall; the campus wide advising center is located in University Studies.
- Other programs of interest to students—Honors College (1,702 students), Liberal Studies, American Studies, Leadership Fellows Program, Pre-Law, Pre-Health Professions, Pre-Vet and Undergraduate Scholars Program.

DATES TO REMEMBER

- Housing Applications - apply and pay deposit online. Housing is open NOW. Priority housing deadline is 3/1/2023 so encourage your students to apply sooner than later. \$300 deposit with \$100 refundable if requested by 3/1/2023.
- Need based FAFSA Priority Deadline is 12/1/2022. FAFSA will continue to be accepted after this date.
- Presidential Scholarship Deadline is 12/2/2022 at 3pm MST. The application is completed online.
- Students can apply for admission and self-report their GPA to be automatically considered for our Montana Premier Scholarships. Awards are limited so students are encouraged to apply as soon as possible.
- Visit Campus - daily virtual and in-person visits year round or join us at a MSU Friday programs. Check for available dates at www.montana.edu/visit.

DEADLINES

Priority Application Deadline: Rolling admission
 Priority Financial Aid Deadline: 1-Dec

INSTITUTION CONTACTS

Mike Ouart, Director of Admissions
 mouart@montana.edu | (406) 994-2452

STUDENT LIFE & COMMUNITY

- MSU is continuing to build and grow to serve our students. MSU recently opened a new \$10 co-edu freshmen residents hall; opened American Indian Hall; finished a \$25 million repurposing of Romney Hall to add 1,000 classroom seats and give new homes to the Veteran Support Center, Math and Writing Center and other student support centers; opened the new Bobcat Athletic Complex; and is progressing on a renovation of the new student Wellness Center that will bring medical, dental, mental health services together with our student exercise facilities.
- NCAA Division I athletics and 75% of students participate in intramural sports. 2021-2022 was the year of the Bobcat with both the Men's and Women's Basketball

teams making their NCAA Tournaments after winning the Big Sky Conference; football playing in the FCS National Championship and many other accomplishments by our student-athletes.

- Students can study abroad at over 250 locations worldwide and/or at hundreds of institutions in the USA.
- The Office of Student Engagement connects hundreds of student volunteers with projects that provide valuable human and community services in the Bozeman area and throughout other parts of the state and the nation.
- Whatever you did in high school, you can probably find here and more. MSU offers more than 300 student clubs, ranging from club hockey to horticulture club.

HIGHLIGHTS

- 69% of the MSU Honors Scholars (136 out of 197) selected MSU in the fall of 2022.
- Approximately 205 employers, including Boeing, Zoot Enterprises, Land O' Lakes, Micron, US Department of State, FDIC, and Bobcat Company visited with our students in early October at the Annual Fall Career Fair. Additionally, over 50 employers conducted personal interviews after the fair. Organizations come twice a year to recruit MSU students for their internship & full time employment needs.
- MSU has produced 84 Goldwater Scholarships, tying us for 10th in the nation and 3rd in the western US behind Stanford and Caltech. Schools just above MSU in the total rankings include Harvard, Princeton, Duke and MIT.
- MSU is one of only 146 institutions nationwide to receive R1 research status from the Carnegie Classification of Institutions of Higher Education. MSU is one of two that is also classified to have an enrollment profile of "very high undergraduate." Put these with MSU's beautiful location and MSU is truly one of a kind.
- Spending over \$200 million in fiscal year 2021-2022, MSU is the largest research entity in the state of Montana and is among the top 3% of colleges and universities for research expenditures.
- The Academic Advising Center is available to all students. In addition to general advising, it provides help with changing majors, career exploration and much more.
- While MSU has grown, our average GPA and test scores have continued to increase. In the fall of 2022, the average GPA was a 3.61, *ACT: 24.3, *SAT: 1193. *Note: ACT/GAT scores are optional, and NOT required for admissions purposes.

IMPORTANT THINGS TO KNOW

- MSU is test optional for students entering the fall of 2023 for admission. Encourage your students to apply and submit their credentials as soon as possible. MSU offers part time options, exemptions and provisional options for those that do not meet our stated requirements.

MONTANA ANNOUNCEMENTS

WE ARE EXCITED TO BRING YOU
UPDATES & PRESENTATIONS FROM OUR
FOLLOWING MONTANA AGENCIES &
ORGANIZATIONS.



A BIG THANK YOU TO EACH OF THEM
FOR THEIR SUPPORT OF THIS EVENT!

2021-2022 Promotions | Overview

Thank you for your partnership!

③ FALL FAIRS, COUNSELOR UPDATE, SPRING FAIRS, MT TRIBAL COLLEGE INSTITUTE, & VIRTUAL EVENTS (Continued)

REGISTRATION INFORMATION

FREE FOR ALL STUDENTS TO ATTEND!
EXHIBITORS SIGN UP TO SAVE A TABLE!

Each program has more details outlined below.



MONTANA COLLEGE & CAREER FAIRS | FALL

IN-PERSON & VIRTUAL EXPLORATION DAY | SEPTEMBER 2021



- Free for all students, counselors, schools, parents, etc. to attend these events!
- These events are a wonderful way to learn about our Montana Colleges along with many more options after high school & preview different colleges, universities, military branches, agencies, & more all in one place.
- Students, parents, counselors, etc. are all invited to attend!
- **18 IN-PERSON COLLEGE & CAREER FAIRS***
 - September 2021 | *Pending COVID-19 Developments

[SIGN UP FOR AN EXHIBITOR TABLE](#)

COLLEGE & CAREER EXPLORATION DAY

VIRTUAL | OCTOBER 28, 2021



- Free for all to attend!
- This virtual event is a wonderful way to learn about options after high school & preview 100+ different colleges, universities, military branches, agencies, & more all in one place.
- Students, parents, counselors, etc. are all invited to attend!
- Available on-demand.

[MORE INFORMATION](#)

MONTANA TRIBAL COLLEGE, CAREER FAIRS, & INSTITUTE

IN-PERSON & VIRTUAL INSTITUTE | APRIL 2022



- *Free for all students, counselors, schools, parents, etc. to attend these events!*
- These events are a wonderful way to learn about our Montana Tribal Colleges along with many more options after high school & preview different colleges, universities, military branches, agencies, & more all in one place.
- Students, parents, counselors, etc. are all invited to attend!
- MONTANA TRIBAL COLLEGE INSTITUTE & RELATIONS EVENT
 - April 27-28, 2022 with all 7 Montana Tribal Colleges
- **IN-PERSON COLLEGE & CAREER FAIRS**
 - April 4-7 & 11-12, 2022 with events hosted @
 - [AANIIH NAKODA COLLEGE](#)
 - [BLACKFEET COMMUNITY COLLEGE](#)
 - [CHIEF DULL KNIFE COLLEGE](#)
 - [FORT PECK COMMUNITY COLLEGE](#)
 - [LITTLE BIGHORN COLLEGE](#)
 - [SALISH KOOTENAI COLLEGE](#)
 - [STONE CHILD COLLEGE](#)

[MORE INFORMATION](#)

ONLINE INTEREST FORM | REQUEST INFORMATION

OPEN FALL 2021



- Would you like to easily request information all in one form from 100+ colleges, universities, military branches, agencies, career options, and more?
- Here is your chance to quickly select who you would information.

MONTANA GIVES BACK



- Students, here is your chance to give back in community service and gain a resume credential / award, and potentially increase your chance of winning scholarships by doing community service.
- www.MontanaGivesBack.com

INFORMATION POSTER
MORE INFO

2021-2022 Promotions | Overview

Thank you for your partnership!

③ COUNSELOR UPDATE , FALL FAIRS, SPRING FAIRS, MT TRIBAL COLLEGE INSTITUTE, & VIRTUAL EVENTS (Continued)





2022 MONTANA TRIBAL COLLEGE & CAREER FAIR CIRCUIT

WEEK ONE | APRIL 4 – 7, 2022

MONDAY, APRIL 4, 2022

Blackfeet Community College

- Campus Address: 504 East Boundary Street, Browning, Montana, 59417
- Location: On BCC Campus - @ Student Commons Area in the Building Beaver Painted Lodge in Browning, Montana
- Event Details | Fair Time: 11:00 a.m. - 2:00 p.m.
- On-Site Coordinator Contact Information: Ali Smith / alishmith@bfcc.edu / (406) 338-5421

TUESDAY, APRIL 5, 2022

Stone Child College

- Campus Address: 8294 Upper Box Elder Rd, Box Elder, Montana, 59521
- Location: On SCC Campus - @ Stone Child's Campus Gym in Box Elder, Montana
- Event Details | Fair Time: 11:00 a.m. - 2:00 p.m.
- On-Site Coordinator Contact Information: Shana Henry / shenry@stonechild.edu / (406) 395-4875

WEDNESDAY, APRIL 6, 2022

Aaniiih' Nakoda College

- Campus Address: Hwy 2 and 66, (Fort Belknap Agency) Fort Belknap, Montana, 59526
- Location: On ANC Campus - @ the Red Whip Gymnasium in Fort Belknap, Montana
- Event Details | Fair Time: 9:00 a.m. - 12:00 p.m.
- On-Site Coordinator Contact Information: Kim Barrows | kbarrows@ancollege.edu | 406-353-2607 or 406-353-3907 & Bob Parsley | bparsley@ancollege.edu | (406) 353-2607

THURSDAY, APRIL 7, 2022

Fort Peck Community College

- Campus Address: 605 Indian Avenue, Poplar, Montana, 59255
- Location: On FPCC Campus - @ the GTD Auditorium in Poplar, Montana
- Event Details | Fair Time: 9:30 a.m. - 12:00 p.m.
- On-Site Coordinator Contact Information: Nourah Abushaban | nabushaban@fpcc.edu | (406) 768-6353

WEEK TWO | APRIL 11 – 12, 2022

MONDAY, APRIL 11, 2022

Chief Dull Knife College

- Campus Address: 1 College Drive, Lame Deer, Montana, 59043
- Location: On CDKC Campus - @ the Main Building in Lame Deer, Montana (*there will be a check-in / welcome table*)
- Event Details | Fair Time: 9:00 a.m. - 12:30 p.m.
- On-Site Coordinator Contact Information: Zane Spang - zspang@cdkc.edu / Joey Ditonno - jditonno@cdkc.edu (406) 477-6215 x189

TUESDAY, APRIL 12, 2022

Little Bighorn College

- Campus Address: 8645 South Weaver Drive, Crow Agency, Montana, 59022
- Location: On LBHC Campus - @ Gym in Crow Agency, Montana
- Event Details | Fair Time: 10:30 a.m. - 1:30 p.m.
- On-Site Coordinator Contact Information: Alda Goodluck - goodlucka@lbhc.cc.mt.us / 406-638-3186 / 406-638-3100

ALL INVITED! FREE TO ATTEND! \$ - SCHOLARSHIP MONEY & DOOR PRIZES!

www.MontanaTribalColleges.org | MontanaColleges.com | 406.351.3531 | Amy.Leary@MontanaColleges.com



MONTANA TRIBAL COLLEGE INSTITUTE & RELATIONS SCHEDULE OF EVENTS

Specially hosted by: The Montana Tribal College Team & MPSEOC

Day 1 | Wednesday, APRIL 27, 2022
10:30 AM – 2:00 PM*

Day 2 | Thursday, APRIL 28, 2022
11:00 AM – 3:00 PM*

*Times subject to change.

- Build Relations with all 7 of Montana Tribal Colleges through live sessions.
- Live Montana Tribal College Institute & Relation Times
 - **DAY 1 | Wednesday, April 27, 2022**
 - 10:30am – 11:00am | Montana Tribal College Team Welcome, Blessing, & Introductions
 - 11:00am – 11:45am | Relationship Building with Aaniiih Nakoda College
 - 12:00am – 12:45am | Relationship Building with Blackfeet Community College
 - 1:00pm – 1:45pm | Relationship Building with Chief Dull Knife College
 - **DAY 2 | Thursday, April 28, 2022**
 - 11:00 – 11:45pm | Relationship Building with Fort Peck Community College
 - 12:00 – 12:45pm | Relationship Building with Little Big Horn College
 - 1:00 – 1:45pm | Relationship Building with Salish Kootenai College
 - 2:00 – 2:45pm | Relationship Building with Stone Child College
- Institute Focus:
 - Each Montana Tribal College campus will have full control over their session presentation and attendees will have the opportunity to connect directly with the college and team members in these live sessions. Sessions will vary by campus. Most sessions will include a welcome from the Campus President and Student Services team along with a formal welcome/ blessing. Some presentations will connect attendees directly with: faculty language/history presentations, current campus highlights, student panels, campus and tribal connection and traditions, and more.
- Sessions hosted via Zoom Technology Connection. Look for an email with details on how to connect to these sessions a few days before the event.
- Live Links To Connect | These will be emailed to your email used in registration. These live links to join each session will be sent a few days before the event and located on the event confirmation page.
- Important Reminders | At the start of each session, we ask all attendees to please sign-in in the chat with: *Full Name, Organization/School, & Title | This is very important for anyone who is wanting OPI Renewal Unit credit for counselors.
 - All sessions are recorded.
 - All Sessions are on Mountain Time (MT).
 - Links to each session is unique, and each session needs to be individually joined.
 - Please join us in having your "Screen on" if possible. Today is all about relationship building. You are important to us, and we want to see you if you are comfortable! 😊
 - Reminder to have your "Zoom Display Name" be your institution / school & your name.
 - Reminder about live Q&A – post questions, comments, feedback, etc. in the chat throughout the sessions and if time remains we will open it up for live questions at the end.
 - Resource Sharing - Please feel free to share any additional resources, events, etc. that you would like to share with everyone in the meeting. We will also do our best to gather and share a list of any resources that are posted in the chat at the end of the event. You are also welcome to email Amy.Leary@MontanaColleges.com directly with your resource information. Thank you for participating!
 - Bring your smile & questions! We are so excited to have you part of this great gathering!
- **IMPORTANT |** *Time schedule subject to change and pending COVID-19 developments. Keep a look out for any last minute changes. We will send all updates via email.

www.MontanaTribalColleges.org | MontanaColleges.com | 406.351.3531 | Guide@MontanaColleges.com

montanacolleges

montanacolleges A Very Special Thanks from the 2021 Montana College Fair Circuit Team!

◆ We wanted to send a very special thank you for attending and supporting this year's Montana College Fairs! We simply could not make this statewide event and collaboration a success without you and your support. A special thanks to all exhibitors, students, counselors, schools, and parents who took the time to attend these fairs. We are so grateful for the hard work put into these fairs by the wonderful site hosts and teams at each site. It takes all of us to make these events a success for students. Thank you for all the good work you do.

★ A huge thank you to all the supporters, partners, and sponsors of these fairs: GEAR UP, Montana University System, Office Of Public Instruction, Reach Higher Montana, Montana Youth Apprenticeship Partnership, Montana Department of Labor & Industry/Career Lab, American Indian College Fund, MASFAA, MSCA, StriveScan, MPSEOC, and all the schools, colleges, universities, military branches, businesses, and agencies.

We hope to see you in the near future! Happy start to the fall season! 😊

Edited · 38w

View insights

♥ 🔍 🚩

🌱 Liked by caredhead and 2 others

OCTOBER 1, 2021

😊 Add a comment... Post

I ATTENDED!

MONTANA TRIBAL COLLEGE INSTITUTE

www.MONTANACOLLEGES.COM

montanacolleges

Thank you, Montana Tribal College Team & All Institute Attendees! What a wonderful gathering and celebration of our Montana Tribal Colleges this last week. Thank you to all of you for your amazing team efforts to help students and education together!

This Montana Tribal College Institute & Relations event included:

- ◆ All 7 Montana Tribal College Teams
- ◆ 123+ registered to attend!
- ◆ 80+ different education institutions, schools, businesses, and agencies represented!
- ◆ 14 different states & districts represented (Montana, Alaska, Arizona, California, Colorado, Michigan, North Dakota, New Mexico, New York, Oregon, Utah, Vermont, Washington, Washington DC & more)
- ◆ 100's of great interactions, chats, resources shared, and overall steps taken toward building relationships.

A VERY SPECIAL THANK YOU

- ◆ A very special thank you to all your partners, friends, & sponsors who help make these events possible. A BIG thank you to:

- ◆ All the amazing site coordinators and team members from the Montana Tribal Colleges who made the event so special.
- ◆ Montana Tribal College Executive Team - Ali Smith, Chair / Joey Ditunno, Past Chair / Emily Ferguson-Steger, Tribal College Team Liaison
- ◆ Blessing & Song: Galendeau "Galen" Rides The Grey Horse from Blackfeet Community College and Ashely Benson from Stone Child College.
- ◆ All Montana Colleges & Education Professionals who attended.
- ◆ GEAR UP, TRIO, Talent Search, Upward Bound, ETS, & the Montana University System | American Indian College Fund | Office of Public Instruction | Reach Higher Montana | Montana Youth Apprenticeship Partnership | Montana Department of Labor & Industry / Career Lab | Montana Post Secondary Educational Opportunities Council (MPSEOC) |
- ◆ & All the Montana & Out-Of-State institutions, programs, colleagues and beyond.

We are so grateful to each and every one of you for your team efforts to help students and education.

#MontanaTribalCollegeTeam | #MontanaColleges | #SupportMontanaStudents

Edited · 7w

View insights

♥ 🔍 📌

👍 Liked by mapsinstitute and 6 others

MAY 6

😊 Add a comment... Post

MONTANA
TRIBAL
COLLEGE
INSTITUTE &
RELATIONS



- [LINK TO MORE EVENT INFORMATION](#) | [Montana Tribal College Institute & Relations Day](#) |

MONTANA TRIBAL COLLEGE INSTITUTE & RELATIONS DAY THANK YOU FOR ATTENDING! SPECIAL THANKS & REMINDERS

Thank you, Montana Tribal College Team & All Institute Attendees! What a wonderful gathering and celebration of our Montana Tribal Colleges. Thank you to all of you for your amazing team efforts to help students and education together.

The Montana Tribal College Institute & Relations event included:

- ◇ All 7 Montana Tribal College Teams
- ◇ 123+ registered to attend!
- ◇ 80+ different education Institutions, schools, businesses, and agencies represented!
- ◇ 14 different states & districts represented (Montana, Alaska, Arizona, California, Colorado, Michigan, North Dakota, New Mexico, New York, Oregon, Utah, Vermont, Washington, Washington DC & more!)
- ◇ 100's of great interactions, chats, resources shared, and overall steps taken toward building relationships.

A VERY SPECIAL THANK YOU

- ◇ *A very special thank you to all your partners, friends, & sponsors who help make these events possible. A BIG thank you to:
 - *All Montana Tribal College Teams who came together to make this event happen!*
 - *Montana Tribal College Executive Team - Ali Smith, Chair / Joey Ditonno, Past Chair / Emily Ferguson-Steger, Tribal College Team Liaison, - A very special thank you for helping team together to plan and host this day and for your years of dedication to this team.*
 - *Galendean "Galen" Rides The Grey Horse from Blackfeet Community College and Ashely Benson from Stone Child college for a beautiful traditional blessing & song to bless this event.*
 - *All the amazing site coordinators and team members from the Montana Tribal Colleges who made the event so special.*
 - *All Montana Colleges & Education Professionals who attended.*
 - *GEAR UP, TRIO, Talent Search, Upward Bound, ETS, & the Montana University System | American Indian College Fund | Office of Public Instruction | Reach Higher Montana | Montana Youth Apprenticeship Partnership | Montana Department of Labor & Industry / Career Lab | Montana Post Secondary Educational Opportunities Council (MPSEOC) | & All the Montana & Out-Of-State institutions, programs, colleagues and beyond.*
 - *We are so grateful to each and every one of you for your team efforts to help students and education together!*

EVALUATION

Please take a minute to share your thoughts with us. We really appreciate your team efforts to help make future team events grow. Thank you for sharing!

SHARE "I ATTENDED" IMAGE

Please have fun with this social media badge! We would love to see all who attended shining brightly on social media and sharing your commitment to this day of relationship building and collaboration with our Montana Tribal Colleges and beyond. Have fun! Tag us too, and we will share your posts. #MontanaTribalCollegeTeam #MontanaColleges

#SupportMontanaStudents

PRINT CERTIFICATE OF ATTENDANCE

As a thank you for all your time, energy, and collaboration to attend this week's event, we wanted to share a certificate of attendance and appreciation. Please feel free to add your name and print for your office. We appreciate you and all you do for students and education.



SUBMIT RENEWAL CREDIT FORM

SECTION I: PARTICIPANT INFORMATION			
Last Name	First Name Middle Initial		
SED Number	Montana or Former Name Birth Date		
Address	State Zip Code		
SECTION II: INSTRUCTOR OR APPROVED PROVIDER INFORMATION			
Title of Activity	Montana Tribal College Institute & Training	Beginning Date of Activity	4/21/2022
Name of Instructor	MPSEOC - Montana Post Secondary Educational Opportunities Council	Ending Date of Activity	4/28/2022
Approved Provider Name	Montana Post Secondary Educational Opportunities Council	Provider's Phone	(208)331-3821
Location (City, State)		Renewal Units Earned	8

If you are school counselor and would like to gain credit for your time in this institute training, please submit the form linked above by May 20, 2022.

We will then process all of these in the next month and send you a certificate to the email in your registration form. Thank you for attending!

A FEW QUOTES, FEEDBACK, & THANKS

- **SHARED FROM THE EVENT:**

- *"I got so much out of today's Montana Tribal College Institute. Thank you for organizing this. Today I learned more about our Tribal Colleges than I have learned in 3 years. It was fantastic. Thank you again. It was wonderful."*
- *"I learned so much!"*
- *"I love learning from fellow MT TCUs about what helps their students succeed. I love feeling immersed in different campuses"*
- *"I really love how these virtual institutes are teaching us more about how to give back to our communities."*
- *"It was great, so happy I was able to be a part of this. Maybe if there was more time, but I feel like the rest of these sessions, I could sit here all-day learning about these colleges."*
- *"Very thorough and organized. Thanks great to hear from students too!"*
- *"My favorite part was hearing from current students about their experiences. Everyone is so close-knit, so this is refreshing to see. Loved hearing about the college and its support!"*
- *"My favorite part was... the warm introduction. Felt warm and inviting."*
- *"It was great to hear from faculty, staff, and students about their experiences."*
- *"So much good information. It was good to see the faces connected to each program."*
- *"It was all great! I really hearing about the great STEM work they are doing."*
- *"They were great! I haven't seen any type of similar events, and I think it's a model for other TCUs (in other states). It really helped orientate me on what's happening at each college."*
- *"I loved being in a culturally aware and responsive space, even just virtually. Each tribal college emphasizes growing our own in a way that has me so grateful and hopeful for the future of Native education <3"*
- *"I came to this last year and learned so much - so I am here again - thanks!"*
- *"This was amazing! Strength, perseverance, outstanding education! Love this!"*
- *"I loved the integration of students from TCU's to provide the prayer and honor song."*
- *"My favorite part is the talk on the importance of cultural revitalization in the sphere of higher education."*
- *"I loved everyone's introductions. It was so special to hear the language."*
- *"I loved hear about the immersion schools and all of the great work they are doing to move their language forward."*
- *"All of it was great - great visual presentation"*
- *"It was great hearing from the different departments on campus! Admissions, Academic Transfer Service, Trio Student Support Services, Department of Academic Success, Student Housing, student story, Division of Education, Division of Native American Studies, ITE Department, and the language lesson was fun too! "*
- *"My favorite part was learning about the academic programs in-depth and the language tutorial. It was so wonderful to see the amount of extensive resources available for students on-campus and how native language is highly valued."*
- *"There were so many good things. Hearing about your restorative justice circles and the way you work with the MEA was amazing. I got a real sense of the community building work that you do. I would love to hear more about your work with the local high schools."*
- *"Love hearing about the students and where they are involved and engaged across campus and in the community."*
- *"All great information! It was good hearing both the importance of the culture and also the language. What great opportunities for students!"*

EVENT RECORDINGS



**WELCOME &
INTRODUCTIONS**
RECORDING
VIDEO RECORDING
CHAT & SHARING



Harlem, MT
Aaniiih Nakoda College

AANIIIH NAKODA COLLEGE
LIVE SESSION
RECORDING
VIDEO RECORDING
CHAT & SHARING



Browning, MT
**Blackfeet Community
College**

BLACKFEET COMMUNITY
COLLEGE LIVE SESSION
RECORDING
VIDEO RECORDING
CHAT & SHARING



Lame Deer, MT

Chief Dull Knife College

**CHIEF DULL KNIFE
COLLEGE LIVE SESSION**
RECORDING
VIDEO RECORDING
CHAT & SHARING



Poplar, MT

Fort Peck Community
College

**FORT PECK COMMUNITY
COLLEGE LIVE SESSION**
RECORDING
VIDEO RECORDING
CHAT & SHARING



Crow Agency, MT

Little Big Horn College

**LITTLE BIG HORN
COLLEGE LIVE SESSION**
RECORDING
VIDEO RECORDING
CHAT & SHARING



Pablo, MT

Salish Kootenai College

**SALISH KOOTENAI
COLLEGE LIVE SESSION**
RECORDING
VIDEO RECORDING
CHAT & SHARING



Box Elder, MT

Stone Child College

**STONE CHILD COLLEGE
LIVE SESSION**
RECORDING
VIDEO RECORDING
CHAT & SHARING



**DO YOU HAVE
QUESTIONS?**

We are here to help!

Please contact us directly @
Amy.Leary@MontanaColleges.com or
406.531.3531.

RESOURCES SHARED

These resources were shared during the event. Please feel free to share any other resources, and we are happy to add it to this

section. Thank you!

ACCESS RESOURCES SHARED

SHARE A RESOURCE

TO BE INCLUDED

The screenshot displays a grid of 18 resource cards, each representing a different organization or program. The cards are arranged in two rows of nine. Each card features a logo at the top, followed by the organization's name, a 'LOGO / PICTURE' label, a 'RESOURCE TITLE', and a 'DETAILS' section with a brief description and a 'LINK FOR MORE DETAILS'.

Organization/Program	Resource Title	Details
Aaniiih Nakoda College	More Campus Information	Please visit our website for more information about our campus! We hope to see you again!
American Indian College Fund	Full Circle & Tribal College Scholarsh...	The American Indian College Fund provides scholarships to American Indian and Alaska Native college students seekin...
Blackfeet Community College	More Campus Information	Please visit our website for more information about our campus! We hope to see you again!
Chief Dull Knife College	More Campus Information	Please visit our website for more information about our campus! We hope to see you again!
Fort Peck Community College	More Campus Information	Please visit our website for more information about our campus! We hope to see you again! Full playlist of the Buffalo ...
Little Big Horn College	More Campus Information	Please visit our website for more information about our campus! We hope to see you again! Berthina Homee 406-638-312...
Montana Department of Labor & Industry	Website & Resources	Please visit our website for more information!
Montana GEAR UP / TRIO / ...	Website & Resources	Please visit our website for more information!
Montana Tribal College Team	Website & Resources	The Montana Tribal College Team hosts many events throughout the year to help students. Visit our website for ...
Montana University System	Website & Resources	Please visit our website for more information!
Montana Youth Apprenticeship Partnership	Website & Resources	Please visit our website for more information!
MPSEOC Montana Colleges	Other Events & Programming Colle...	MPSEOC hosts many events throughout the year to help students. Visit our website for more information! We hope to...
Office of Public Instruction	Website & Resources	Please visit our website for more information!
PNACAC Conference May 2...	Montana Tribal College Represent...	PNACAC is able to guarantee one free registration to each Montana Tribal College but are collecting additional contact ...
Reach Higher Montana	Education Training Vouchers	Hello - I wanted to let everyone know (and/or remind you that Reach Higher Montana has Education and Training Vouche...
REO	Student Financial Support	Hi Everyone my name is Gabi, I work with Rural Employment Opportunities (REO) - montanareo.org -we are a non ...
Salish Kootenai College	More Campus Information	Please visit our website for more information about our campus! We hope to see you again! Fast facts about SKC ...
Stone Child College	More Campus Information	Please visit our website for more information about our campus! We hope to see you again! Check out our campus video ...



A VERY SPECIAL THANK YOU!

| A VERY SPECIAL THANK YOU TO ALL OUR PARTNERS AND SPONSORS OF THIS EVENT.

| WE ARE SO GRATEFUL FOR YOUR TEAM SUPPORT AND EFFORTS TO HELP STUDENTS AND EDUCATION TOGETHER.



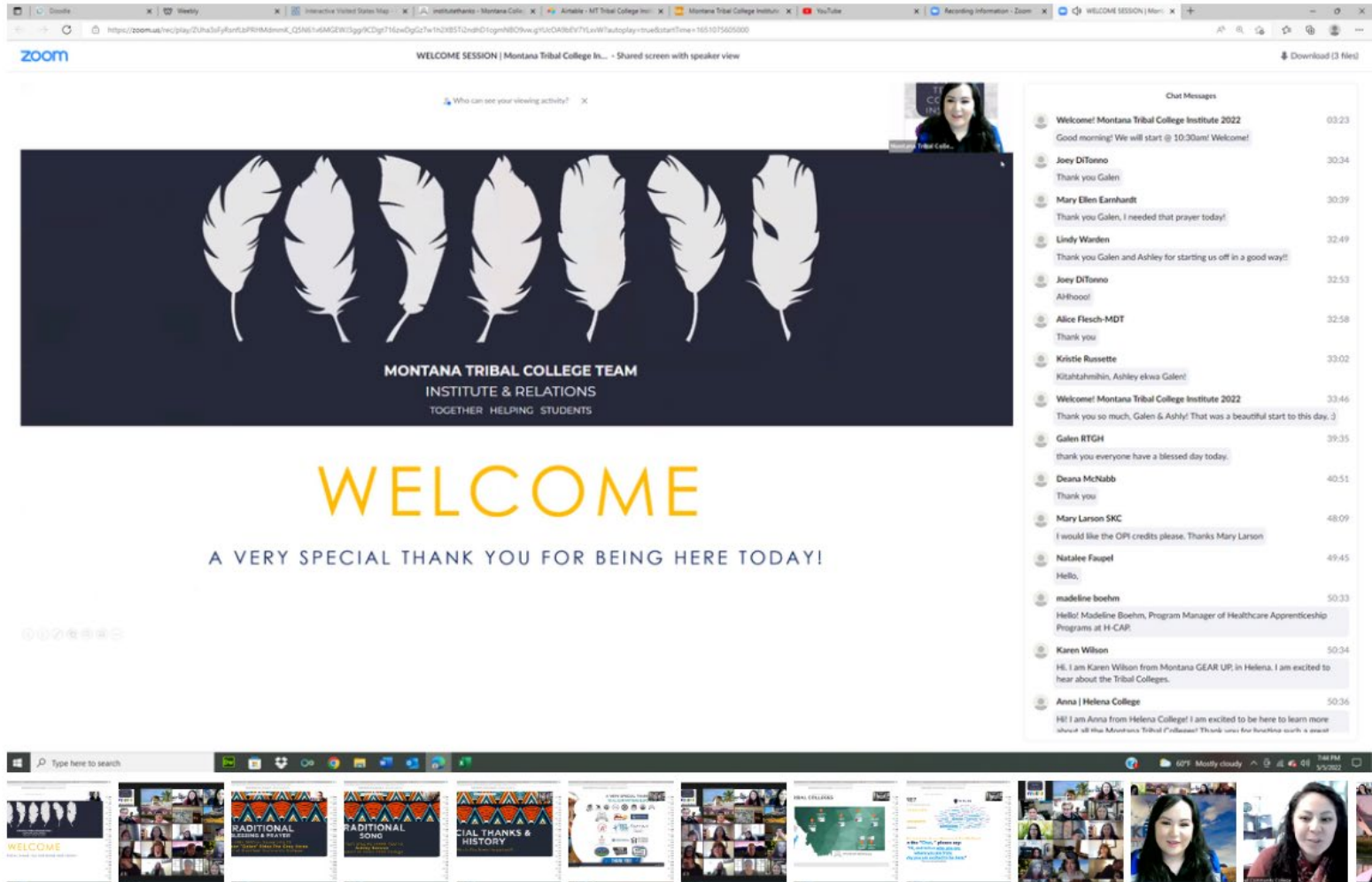
MONTANA TRIBAL COLLEGE TEAM
& ALL MONTANA TRIBAL COLLEGES

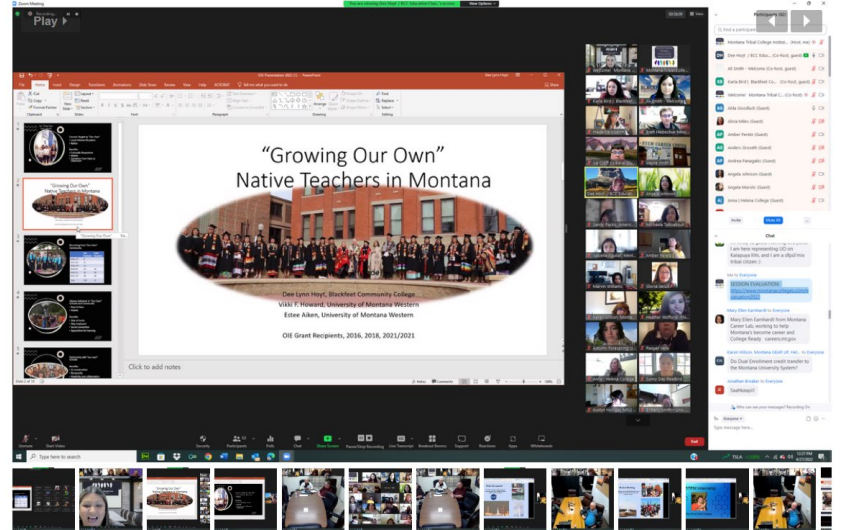
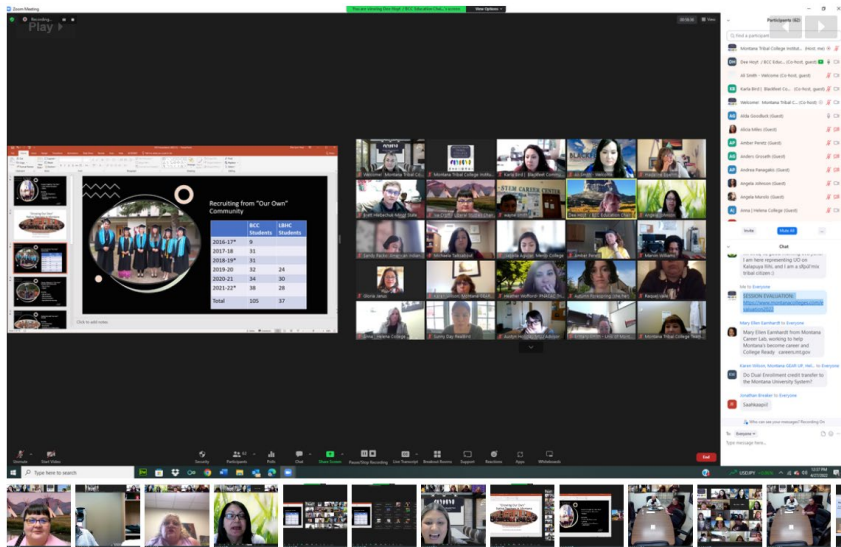
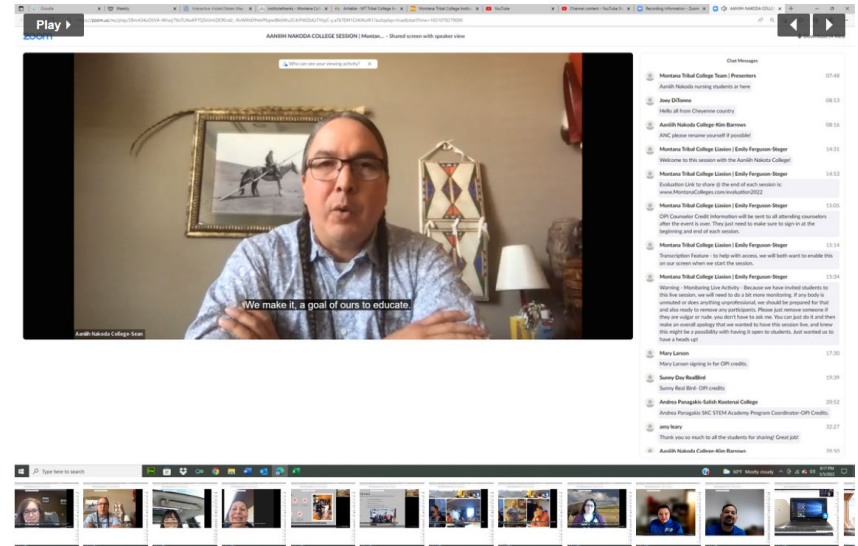
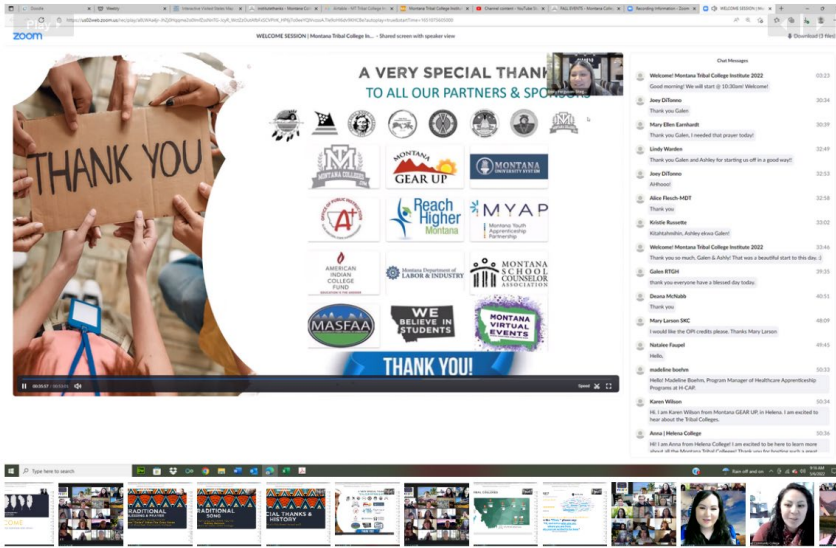


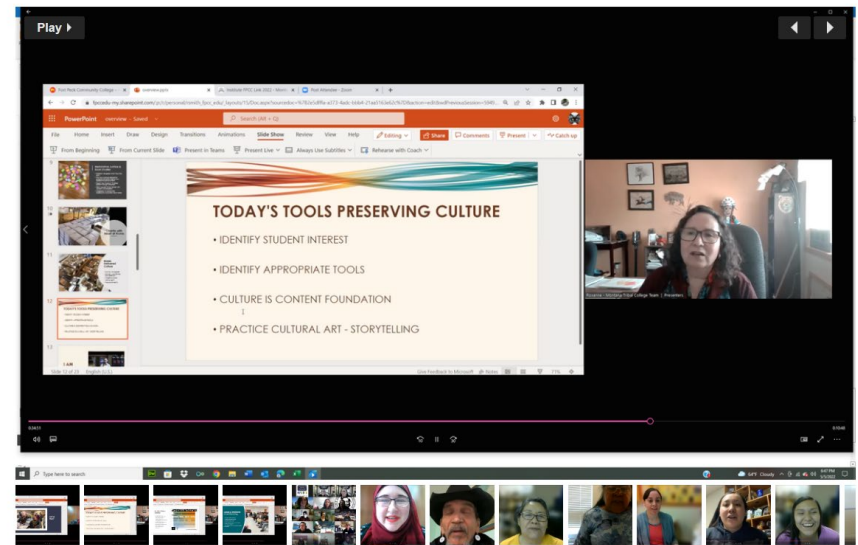
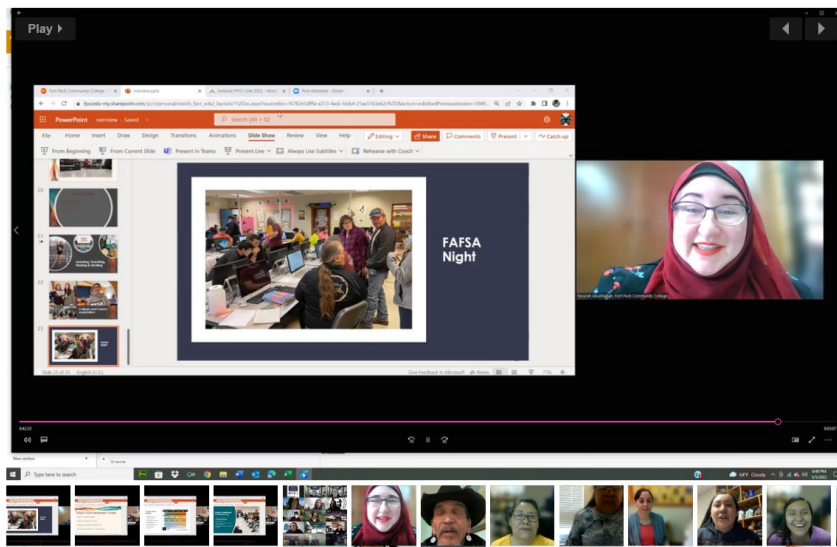
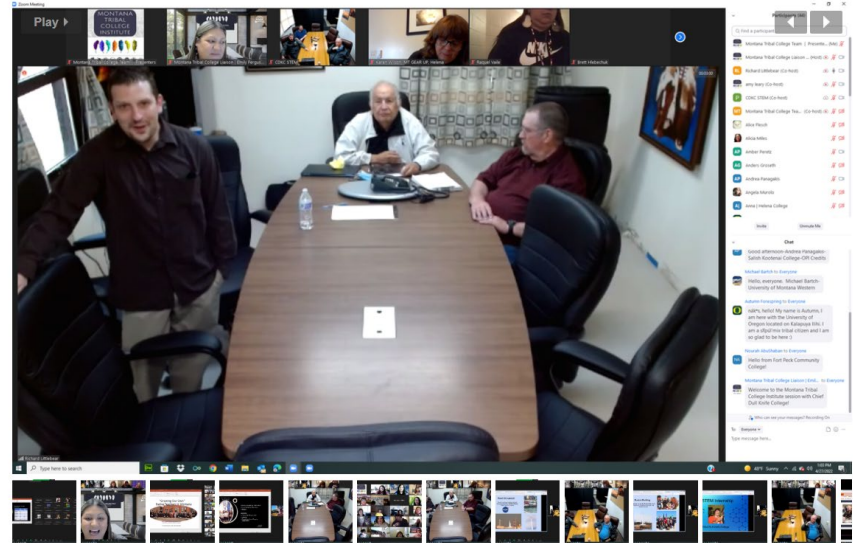
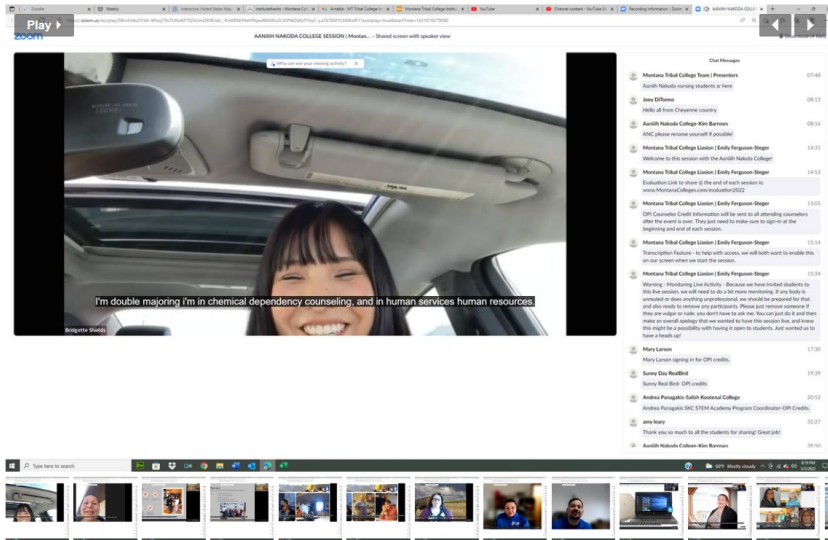
THANK YOU!

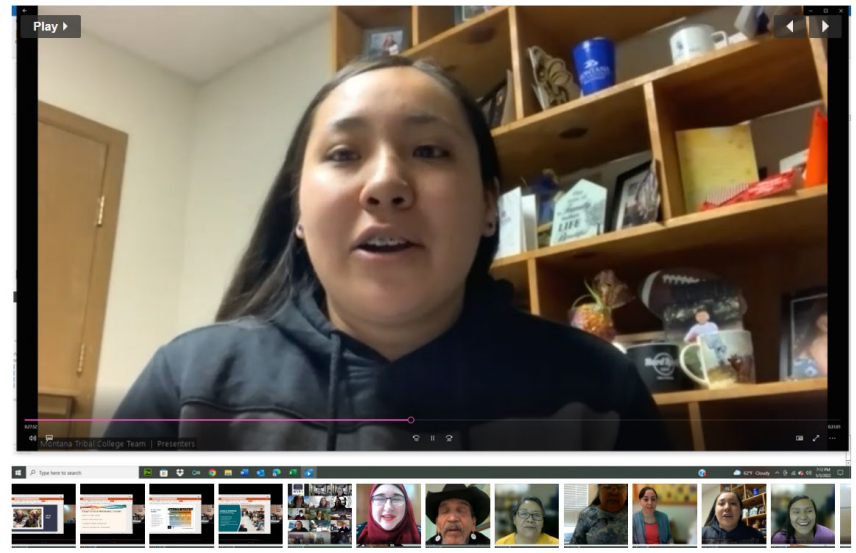
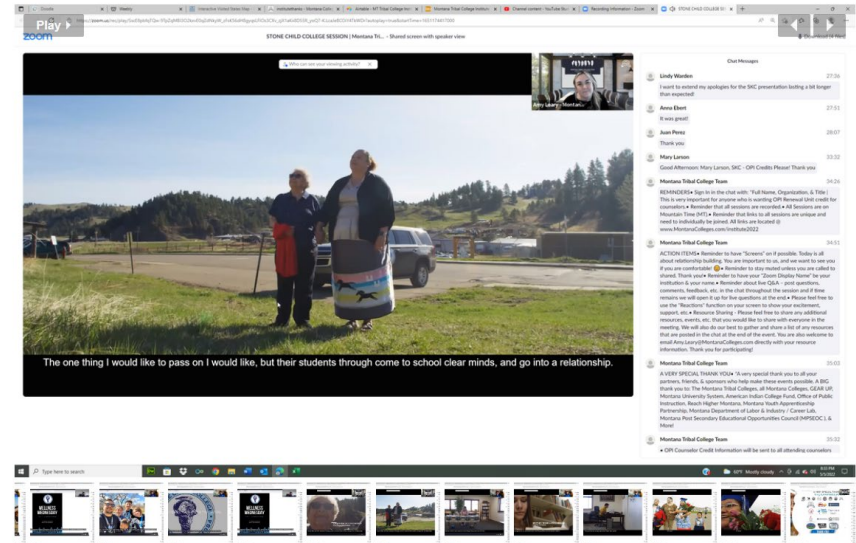
PHOTOS FROM THE DAY!

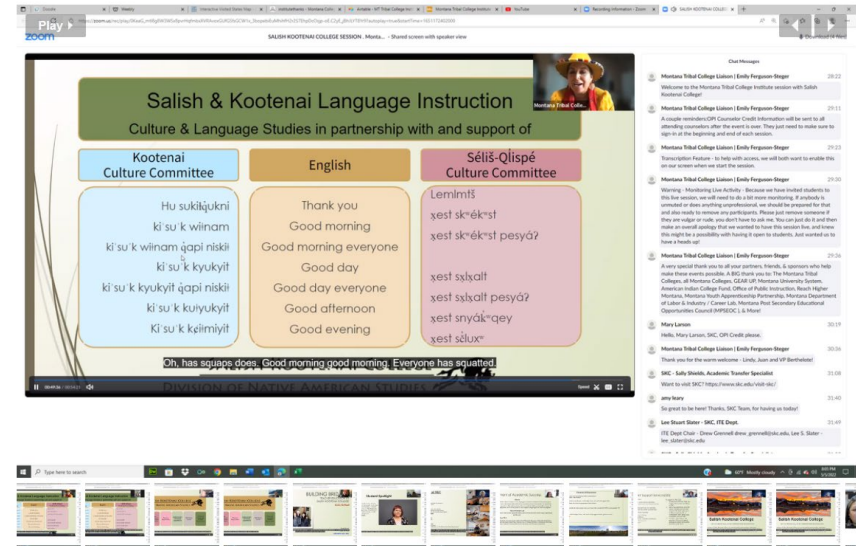
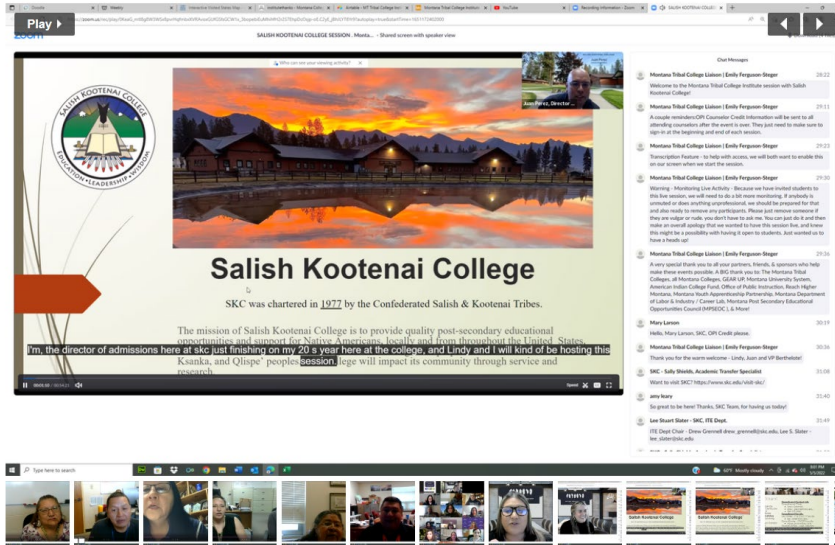
PHOTOS FROM THE DAY!

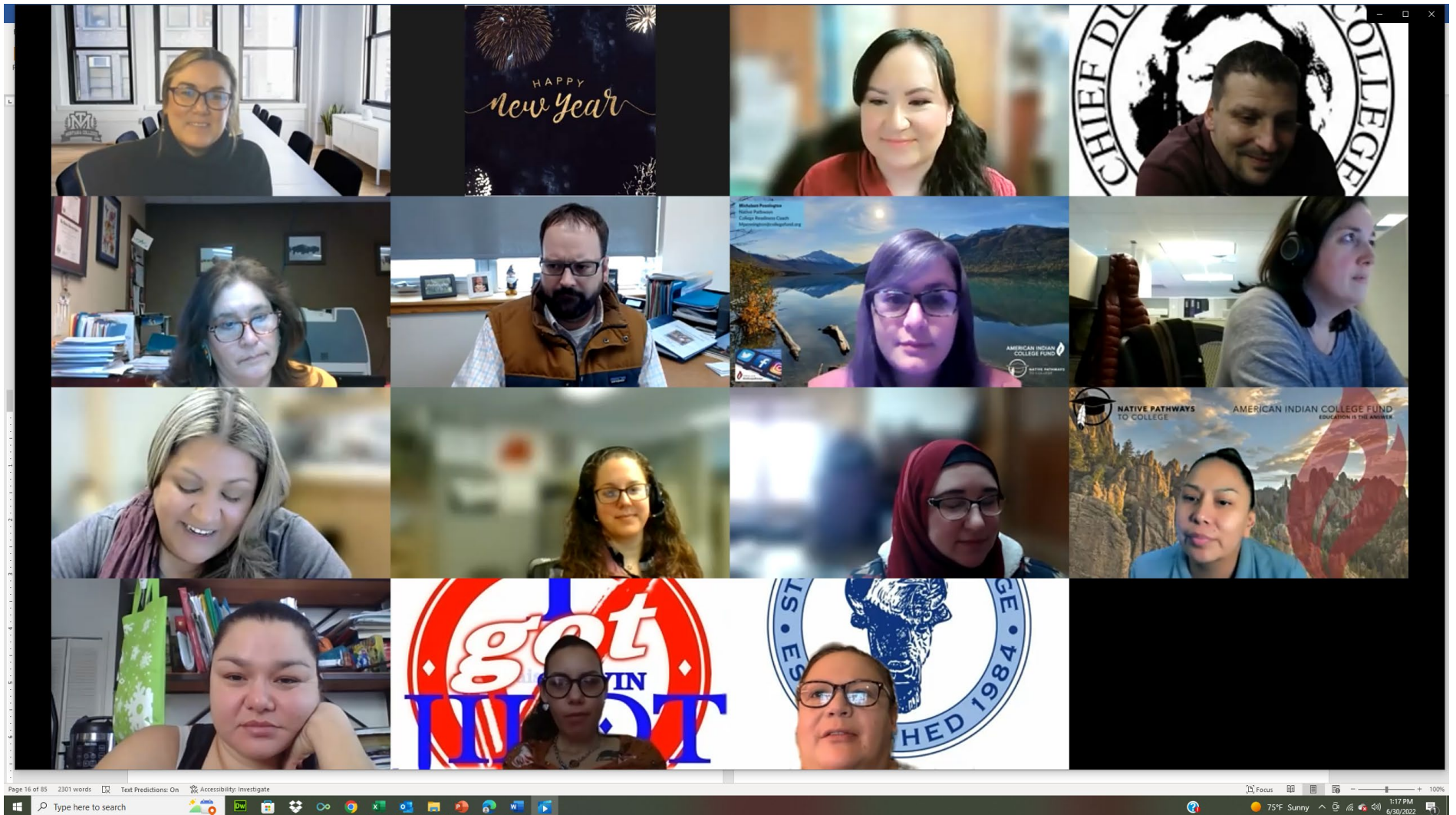


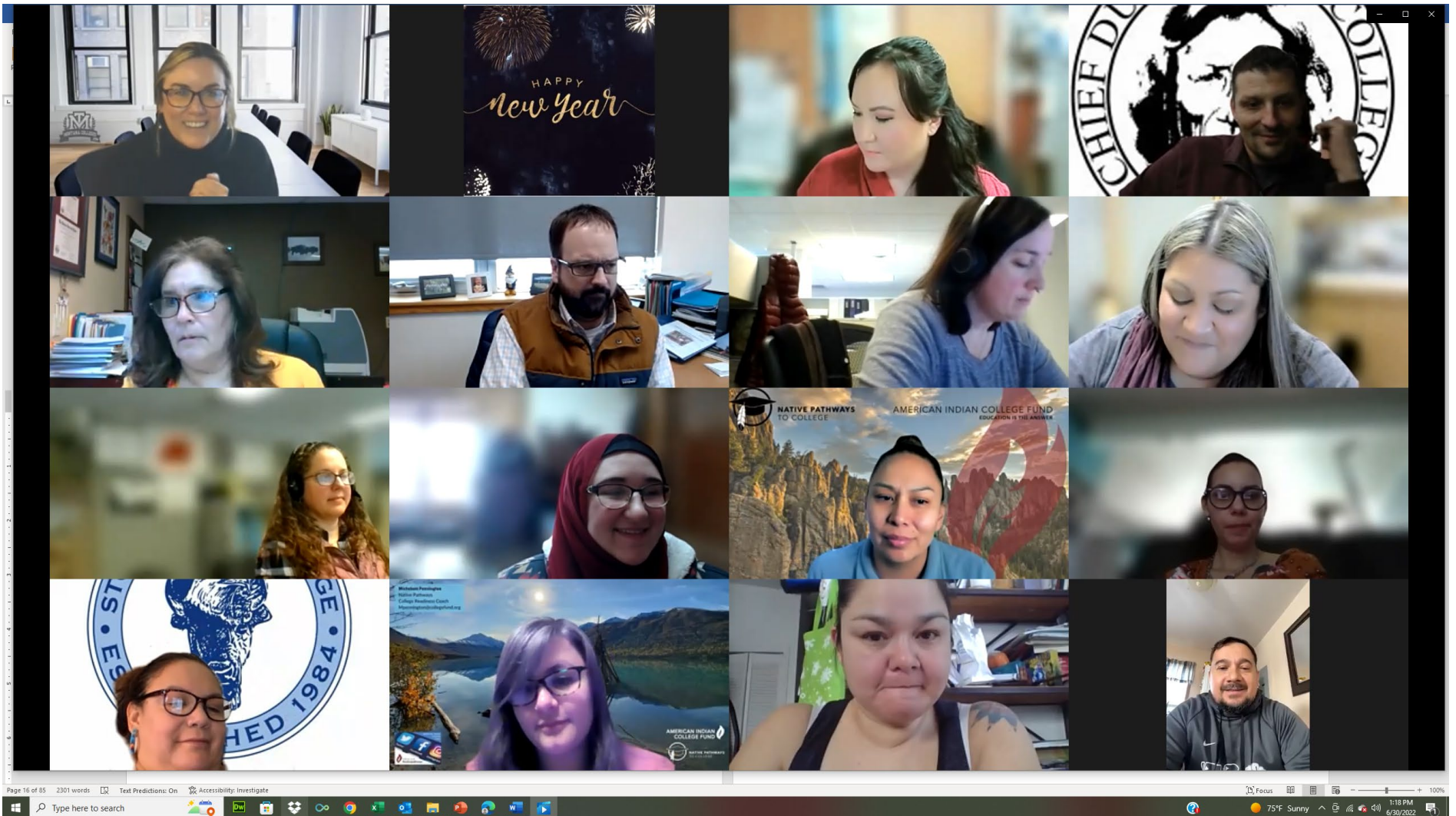














A VERY SPECIAL THANK YOU! TO ALL OUR PARTNERS & SPONSORS



THANK YOU!

MONTANA TRIBAL COLLEGE FAIRS

| *In-Person College & Career Fair Events*

HISTORY

15 Years of offering events in Montana

6 College & Career Fairs | Hosted In-Person

ATTENDANCE

- **All 7** Montana Tribal Colleges Participate
- **18** Fair Exhibitors / Colleges / Agencies attended 1st year.
- **70+** Fair Exhibitors in attendance in our recent events.
- **1,000's** of professionals from colleges, agencies, businesses, military branches, and beyond have visited our Montana Tribal College campuses to build relations because of these events.
- **10,000+** students have attended these events over the years.

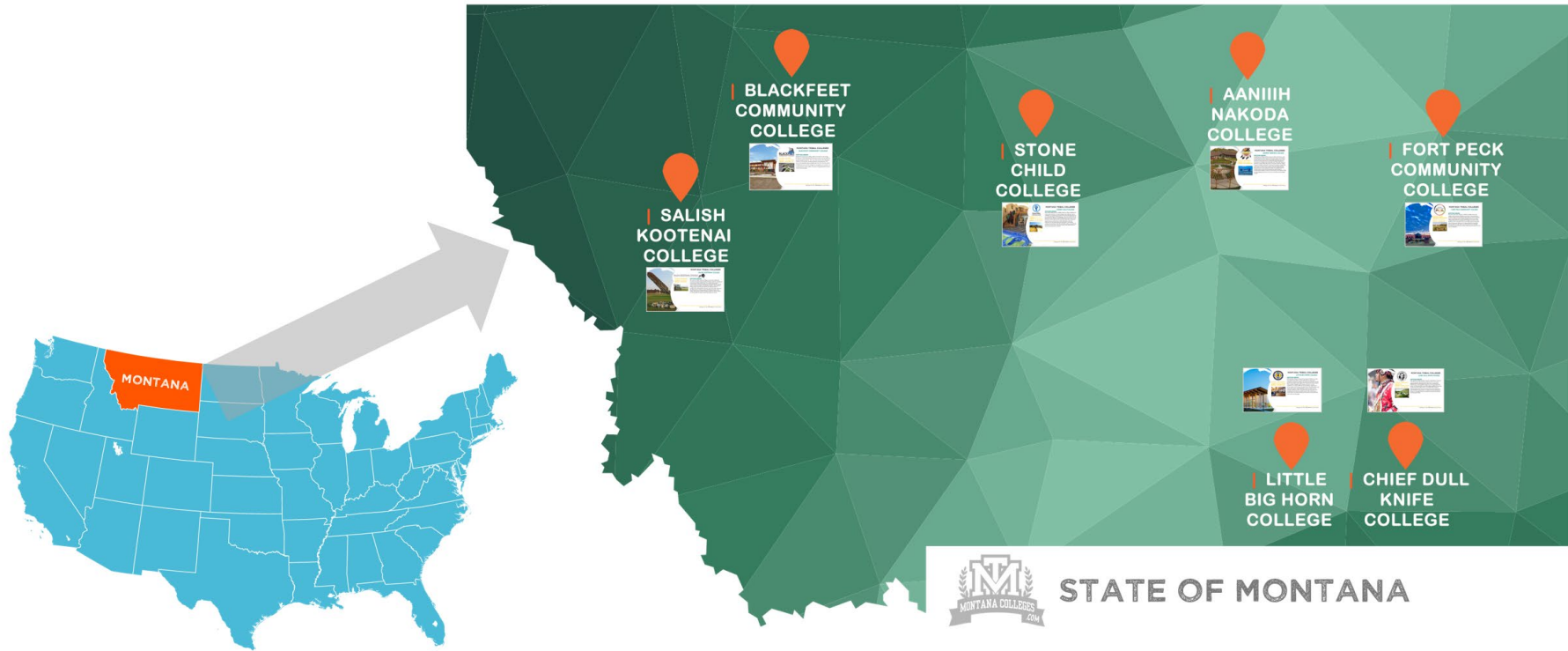


Together Helping Students
www.MontanaTribalColleges.org

MONTANA
 TRIBAL
 COLLEGE
 TEAM

MONTANA'S TRIBAL COLLEGES

| MAP



MONTANA TRIBAL COLLEGES BLACKFEET COMMUNITY COLLEGE



Presenter: Ali Smith

Location: Browning, Montana

Website: www.bfcc.edu



INSTITUTION OVERVIEW

Blackfeet Community College (BCC) is located in Browning, Montana, on the Blackfeet Indian Reservation and is adjacent to Glacier National Park. BCC was chartered by the Blackfeet Tribe in 1974 and the campus property encompasses 725 acres immediately along US highway 2 and 89. It is the vision of Blackfeet Community College to strengthen and enrich our community through quality education integrating Nii-tsi-ta-pi world of knowledge.

Do you have questions that you would like us to answer?

Message us in the “Chat Feature” on your screen.



SCHEDULE OF EVENTS

APRIL 27 & 28, 2022

Day 1 | April 27, 2022 | 10:30 am - 2:00 pm

- **10:30am – 11:00am** | Montana Tribal College Team
Welcome, Blessing, & Introductions
- **11:00am - 11:45am** | Aaniiih Nakoda College
- **12:00am - 12:45am** | Blackfeet Community College
- **1:00pm - 1:45pm** | Chief Dull Knife College

Day 2 | April 28, 2022 | 11:00 am - 3:00 pm

- **11:00 - 11:45pm** | Fort Peck Community College
- **12:00 - 12:45pm** | Little Big Horn College
- **1:00 - 1:45pm** | Salish Kootenai College
- **2:00 - 2:45pm** | Stone Child College

ALL EVENT DETAILS @ www.MontanaColleges.com/institute2022

MONTANA TRIBAL COLLEGE INSTITUTE

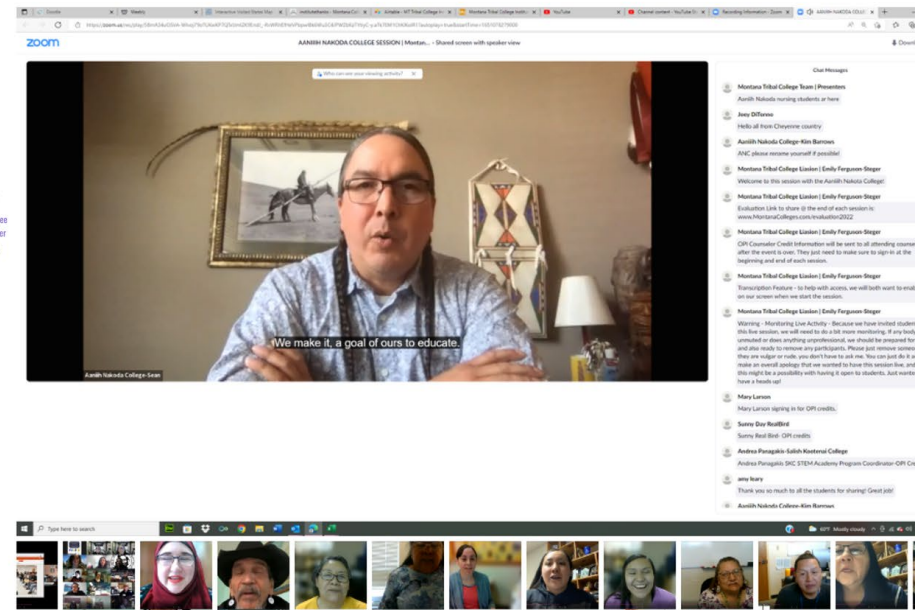
| Who has attended this event the last two years?

OVERALL REGISTRATION
300+/- Registrants

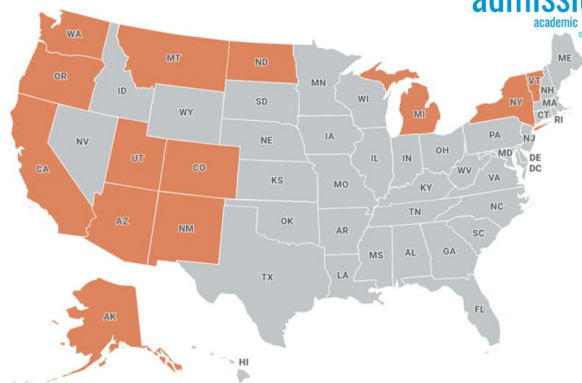
INSTITUTIONS REPRESENTED
130+ Different Institutions



PHOTOS FROM THE DAY!



WHO WAS REPRESENTED?



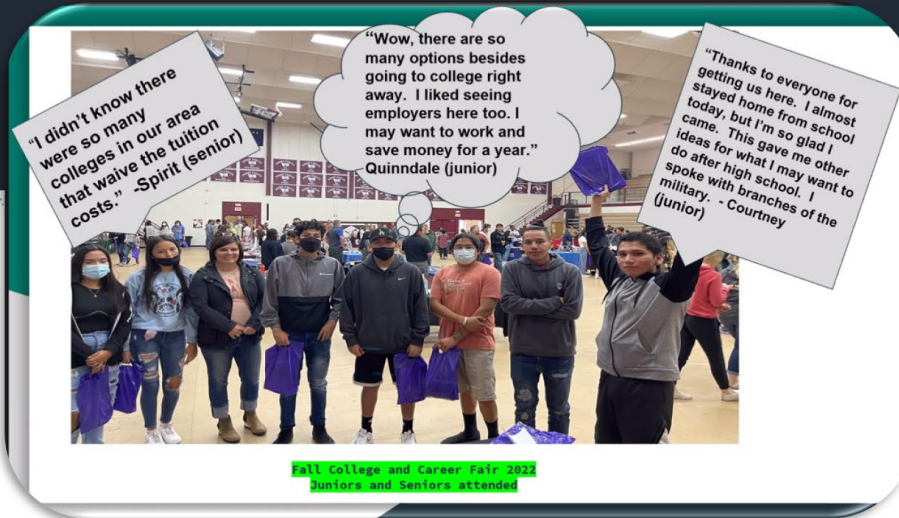
VIDEO & PICTURES REFLECTION OF PAST EVENTS



PREVIEW VIDEO & PICTURES @
WWW.MONTANACOLLEGES.COM/INSTITUTE

FINDINGS

What have we learned?



MONTANA TRIBAL COLLEGE FAIRS

HOW DID YOU LIKE THE FAIR TODAY?

PLEASE SHARE YOUR THOUGHTS WITH US!

Help us make this event better for you and other students in the future!

WOULD YOU ATTEND ANOTHER FAIR LIKE THIS IF WE CAME BACK? (circle your choice)

YES

NO

COMMENTS?

WHAT WAS YOUR FAVORITE PART OF THIS FAIR?

It was really helpful im looking forward to my future and I am really excited.

WHAT WAS THE BEST THING YOU LEARNED AT THE FAIR?

All the colleges i can go to it makes me want to try even harder.

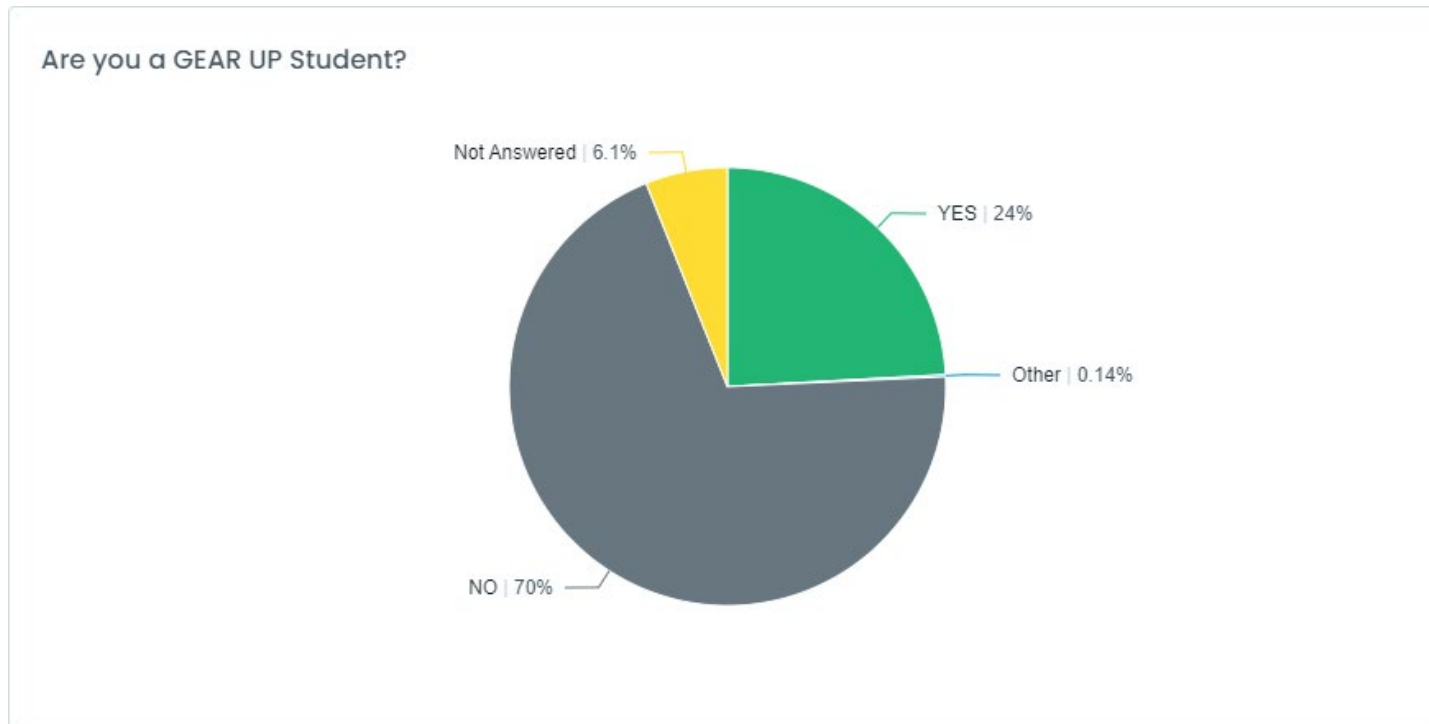
WHAT ELSE WOULD YOU LIKE TO SEE AT THIS FAIR?

nothing this was pretty awesome

STUDENT FEEDBACK & EVALUATIONS - FROM 2021 SPRING MT TRIBAL COLLEGE & CAREER FAIRS

| *Feedback from students @ these fairs -*

- At these fairs, we have had 678 students who have submitted feedback from these events. *Important notice: This does not include all fair attendees, but only the attendees who chose to submit feedback.*
- Of all the college, high school, and community member attendees that submitted feedback, 24% of fair attendees at the Tribal College Fairs are GEAR UP students. That is 167 GEAR UP students served at these spring MT Tribal College Fair events.
- Out of those students who responded to the question, 99% of students said they would like to attend another fair like this.



A few words from Students who attended the In-Person Fairs / Events

Ahhh yeah, most definitely, for sure I'd attend again!

College Fair is good for the community and student outreach.

Enjoyed this

Great turn out! :-) All the vendors were very professional and friendly.

Great! :-)

Helpful

I like the cop/border patrol guy

I loved it, I had fun and learned a lot

I loved it. People were very nice

It was good

it was very in-depth and interesting

It was very interesting

Many options many booths.

Thank you for the fair!

Very informative

Yeah because I wanna have an idea about getting a good paying job

You learn a lot about different colleges

MONTANA TRIBAL COLLEGE FAIRS
HOW DID YOU LIKE THE FAIR TODAY?
 PLEASE SHARE YOUR THOUGHTS WITH US!
 Help us make this event better for you and other students in the future!

WOULD YOU ATTEND ANOTHER FAIR LIKE THIS IF WE CAME BACK? (circle your choice)

YES NO

COMMENTS?

WHAT WAS YOUR FAVORITE PART OF THIS FAIR?
 getting information

WHAT WAS THE BEST THING YOU LEARNED AT THE FAIR?
 career info

WHAT ELSE WOULD YOU LIKE TO SEE AT THIS FAIR?
 more college info

MONTANA TRIBAL COLLEGE FAIRS
HOW DID YOU LIKE THE FAIR TODAY?
 PLEASE SHARE YOUR THOUGHTS WITH US!
 Help us make this event better for you and other students in the future!

WOULD YOU ATTEND ANOTHER FAIR LIKE THIS IF WE CAME BACK? (circle your choice)

YES NO

COMMENTS?

WHAT WAS YOUR FAVORITE PART OF THIS FAIR?
 getting information

WHAT WAS THE BEST THING YOU LEARNED AT THE FAIR?
 career info

WHAT ELSE WOULD YOU LIKE TO SEE AT THIS FAIR?
 more college info

MONTANA TRIBAL COLLEGE FAIRS
HOW DID YOU LIKE THE FAIR TODAY?
 PLEASE SHARE YOUR THOUGHTS WITH US!
 Help us make this event better for you and other students in the future!

WOULD YOU ATTEND ANOTHER FAIR LIKE THIS IF WE CAME BACK? (circle your choice)

YES NO

COMMENTS?

WHAT WAS YOUR FAVORITE PART OF THIS FAIR?
 Food + prizes

WHAT WAS THE BEST THING YOU LEARNED AT THE FAIR?
 college life

WHAT ELSE WOULD YOU LIKE TO SEE AT THIS FAIR?
 Dogs

MONTANA TRIBAL COLLEGE FAIRS
HOW DID YOU LIKE THE FAIR TODAY?
 PLEASE SHARE YOUR THOUGHTS WITH US!
 Help us make this event better for you and other students in the future!

WOULD YOU ATTEND ANOTHER FAIR LIKE THIS IF WE CAME BACK? (circle your choice)

YES NO

COMMENTS?

WHAT WAS YOUR FAVORITE PART OF THIS FAIR?
 Food + prizes

WHAT WAS THE BEST THING YOU LEARNED AT THE FAIR?
 college life

WHAT ELSE WOULD YOU LIKE TO SEE AT THIS FAIR?
 Dogs

WHAT ELSE WOULD YOU LIKE TO SEE AT THIS FAIR?
 more college info

MONTANA TRIBAL COLLEGE FAIRS
HOW DID YOU LIKE THE FAIR TODAY?
 PLEASE SHARE YOUR THOUGHTS WITH US!
 Help us make this event better for you and other students in the future!

WOULD YOU ATTEND ANOTHER FAIR LIKE THIS IF WE CAME BACK? (circle your choice)
 YES NO

COMMENTS?

WHAT WAS YOUR FAVORITE PART OF THIS FAIR?
 the selections

WHAT WAS THE BEST THING YOU LEARNED AT THE FAIR?
 about my options

WHAT ELSE WOULD YOU LIKE TO SEE AT THIS FAIR?
 it was cool how it was.

MONTANA TRIBAL COLLEGE FAIRS
HOW DID YOU LIKE THE FAIR TODAY?
 PLEASE SHARE YOUR THOUGHTS WITH US!
 Help us make this event better for you and other students in the future!

WOULD YOU ATTEND ANOTHER FAIR LIKE THIS IF WE CAME BACK? (circle your choice)
 YES NO

COMMENTS?

WHAT WAS YOUR FAVORITE PART OF THIS FAIR?
 The opportunities

WHAT WAS THE BEST THING YOU LEARNED AT THE FAIR?
 To utilize all the opportunities

WHAT ELSE WOULD YOU LIKE TO SEE AT THIS FAIR?
 opportunities

MONTANA TRIBAL COLLEGE FAIRS
HOW DID YOU LIKE THE FAIR TODAY?
 PLEASE SHARE YOUR THOUGHTS WITH US!
 Help us make this event better for you and other students in the future!

WOULD YOU ATTEND ANOTHER FAIR LIKE THIS IF WE CAME BACK? (circle your choice)
 YES NO

COMMENTS?

love career fair

WHAT WAS YOUR FAVORITE PART OF THIS FAIR?
 learning about the different careers and

WHAT WAS THE BEST THING YOU LEARNED AT THE FAIR?
 All the different job opportunities

WHAT ELSE WOULD YOU LIKE TO SEE AT THIS FAIR?
 more attendees

MONTANA TRIBAL COLLEGE FAIRS
HOW DID YOU LIKE THE FAIR TODAY?
 PLEASE SHARE YOUR THOUGHTS WITH US!
 Help us make this event better for you and other students in the future!

WOULD YOU ATTEND ANOTHER FAIR LIKE THIS IF WE CAME BACK? (circle your choice)
 YES NO

COMMENTS?

WHAT WAS YOUR FAVORITE PART OF THIS FAIR?
 All of it

WHAT WAS THE BEST THING YOU LEARNED AT THE FAIR?

WHAT ELSE WOULD YOU LIKE TO SEE AT THIS FAIR?

MONTANA TRIBAL COLLEGE FAIRS
HOW DID YOU LIKE THE FAIR TODAY?
PLEASE SHARE YOUR THOUGHTS WITH US!
Help us make this event better for you and other students in the future!

WOULD YOU ATTEND ANOTHER FAIR LIKE THIS IF WE CAME BACK? (circle your choice)
 YES NO
COMMENTS? Love career fair

WHAT WAS YOUR FAVORITE PART OF THIS FAIR?
Door prizes and scholarships

WHAT WAS THE BEST THING YOU LEARNED AT THE FAIR?
Career and education opportunities

WHAT ELSE WOULD YOU LIKE TO SEE AT THIS FAIR?
more ppl

MONTANA TRIBAL COLLEGE FAIRS
HOW DID YOU LIKE THE FAIR TODAY?
PLEASE SHARE YOUR THOUGHTS WITH US!
Help us make this event better for you and other students in the future!

WOULD YOU ATTEND ANOTHER FAIR LIKE THIS IF WE CAME BACK? (circle your choice)
 YES NO
COMMENTS?

WHAT WAS YOUR FAVORITE PART OF THIS FAIR?
everything

WHAT WAS THE BEST THING YOU LEARNED AT THE FAIR?

WHAT ELSE WOULD YOU LIKE TO SEE AT THIS FAIR?

MONTANA TRIBAL COLLEGE FAIRS
HOW DID YOU LIKE THE FAIR TODAY?
PLEASE SHARE YOUR THOUGHTS WITH US!
Help us make this event better for you and other students in the future!

WOULD YOU ATTEND ANOTHER FAIR LIKE THIS IF WE CAME BACK? (circle your choice)
 YES NO
COMMENTS?

WHAT WAS YOUR FAVORITE PART OF THIS FAIR?
all the choices

WHAT WAS THE BEST THING YOU LEARNED AT THE FAIR?

WHAT ELSE WOULD YOU LIKE TO SEE AT THIS FAIR?

MONTANA TRIBAL COLLEGE FAIRS
HOW DID YOU LIKE THE FAIR TODAY?
PLEASE SHARE YOUR THOUGHTS WITH US!
Help us make this event better for you and other students in the future!

WOULD YOU ATTEND ANOTHER FAIR LIKE THIS IF WE CAME BACK? (circle your choice)
 YES NO
COMMENTS?

WHAT WAS YOUR FAVORITE PART OF THIS FAIR?
lots of different career opportunities.

WHAT WAS THE BEST THING YOU LEARNED AT THE FAIR?

WHAT ELSE WOULD YOU LIKE TO SEE AT THIS FAIR?

MONTANA TRIBAL COLLEGE FAIRS
HOW DID YOU LIKE THE FAIR TODAY?
 PLEASE SHARE YOUR THOUGHTS WITH US!
 Help us make this event better for you and other students in the future!

WOULD YOU ATTEND ANOTHER FAIR LIKE THIS IF WE CAME BACK? (circle your choice)
 YES NO

COMMENTS?

WHAT WAS YOUR FAVORITE PART OF THIS FAIR?
 Seeing the different opportunities

WHAT WAS THE BEST THING YOU LEARNED AT THE FAIR?
 different routes to get where I want to be

WHAT ELSE WOULD YOU LIKE TO SEE AT THIS FAIR?

MONTANA TRIBAL COLLEGE FAIRS
HOW DID YOU LIKE THE FAIR TODAY?
 PLEASE SHARE YOUR THOUGHTS WITH US!
 Help us make this event better for you and other students in the future!

WOULD YOU ATTEND ANOTHER FAIR LIKE THIS IF WE CAME BACK? (circle your choice)
 YES NO

COMMENTS?

WHAT WAS YOUR FAVORITE PART OF THIS FAIR?
 Seeing all colleges & programs

WHAT WAS THE BEST THING YOU LEARNED AT THE FAIR?
 about scholarships

WHAT ELSE WOULD YOU LIKE TO SEE AT THIS FAIR?

MONTANA TRIBAL COLLEGE FAIRS
HOW DID YOU LIKE THE FAIR TODAY?
 PLEASE SHARE YOUR THOUGHTS WITH US!
 Help us make this event better for you and other students in the future!

WOULD YOU ATTEND ANOTHER FAIR LIKE THIS IF WE CAME BACK? (circle your choice)
 YES NO

COMMENTS?

WHAT WAS YOUR FAVORITE PART OF THIS FAIR?
 All of the different options

WHAT WAS THE BEST THING YOU LEARNED AT THE FAIR?
 Insight to different colleges

WHAT ELSE WOULD YOU LIKE TO SEE AT THIS FAIR?
 more community colleges - bigger space

MONTANA TRIBAL COLLEGE FAIRS
HOW DID YOU LIKE THE FAIR TODAY?
 PLEASE SHARE YOUR THOUGHTS WITH US!
 Help us make this event better for you and other students in the future!

WOULD YOU ATTEND ANOTHER FAIR LIKE THIS IF WE CAME BACK? (circle your choice)
 YES NO

COMMENTS?

WHAT WAS YOUR FAVORITE PART OF THIS FAIR?
 All

WHAT WAS THE BEST THING YOU LEARNED AT THE FAIR?
 more clear career path

WHAT ELSE WOULD YOU LIKE TO SEE AT THIS FAIR?
 N/A

MONTANA TRIBAL COLLEGE FAIRS
HOW DID YOU LIKE THE FAIR TODAY?
PLEASE SHARE YOUR THOUGHTS WITH US!
Help us make this event better for you and other students in the future!

WOULD YOU ATTEND ANOTHER FAIR LIKE THIS IF WE CAME BACK? (circle your choice)

YES NO

COMMENTS?

WHAT WAS YOUR FAVORITE PART OF THIS FAIR?
How helpful everyone was.

WHAT WAS THE BEST THING YOU LEARNED AT THE FAIR?
All the opportunities

WHAT ELSE WOULD YOU LIKE TO SEE AT THIS FAIR?

MONTANA TRIBAL COLLEGE FAIRS
HOW DID YOU LIKE THE FAIR TODAY?
PLEASE SHARE YOUR THOUGHTS WITH US!
Help us make this event better for you and other students in the future!

WOULD YOU ATTEND ANOTHER FAIR LIKE THIS IF WE CAME BACK? (circle your choice)

YES NO

COMMENTS?

WHAT WAS YOUR FAVORITE PART OF THIS FAIR?
All the info available

WHAT WAS THE BEST THING YOU LEARNED AT THE FAIR?
The opportunities out there

WHAT ELSE WOULD YOU LIKE TO SEE AT THIS FAIR?
its good as is.

What other information and/or tools would have been helpful to have for this event?

*Stressing importance of giveaways so my office
~~could~~ gives me more to share next year 😊*

Please rate the following on a 1 - 4 scale. | **1 is the BEST Rating & 4 is the LOWEST Rating**

	BLACKFEET COMMUNITY COLLEGE	STONE CHILD COLLEGE	AANIIH NAKODA COLLEGE	FORT PECK COMMUNITY COLLEGE	CHIEF DULL KNIFE COLLEGE	LITTLE BIGHORN COLLEGE
HOSPITALITY / CATERING						
TIME & LENGTH OF EVENT		<i>All amazing!</i>				
ATTENDANCE						
STUDENT PARTICIPATION						
CAMPUS TOUR						
WELCOME						

←←← PLEASE TURN OVER FOR A FEW MORE QUESTIONS. →→→

STUDENT COLLEGE & CAREER EXPLORATION DAY OVERVIEW



WHEN:

**THURSDAY,
OCTOBER 28, 2021**
FROM 10:00 AM - 1:00 PM

- FOR SENIORS, JUNIORS, & SOPHOMORES
- PARENTS ARE INVITED TO ATTEND! FEEL FREE TO SPREAD THE WORD!
- FREE FOR ALL TO ATTEND!

WHERE:

- THESE SESSIONS ARE HOSTED BY STRIVESCAN AND WILL BE SHARED VIRTUAL VIA ZOOM TECHNOLOGY & MAY BE ACCESSED FROM YOUR SCHOOL.

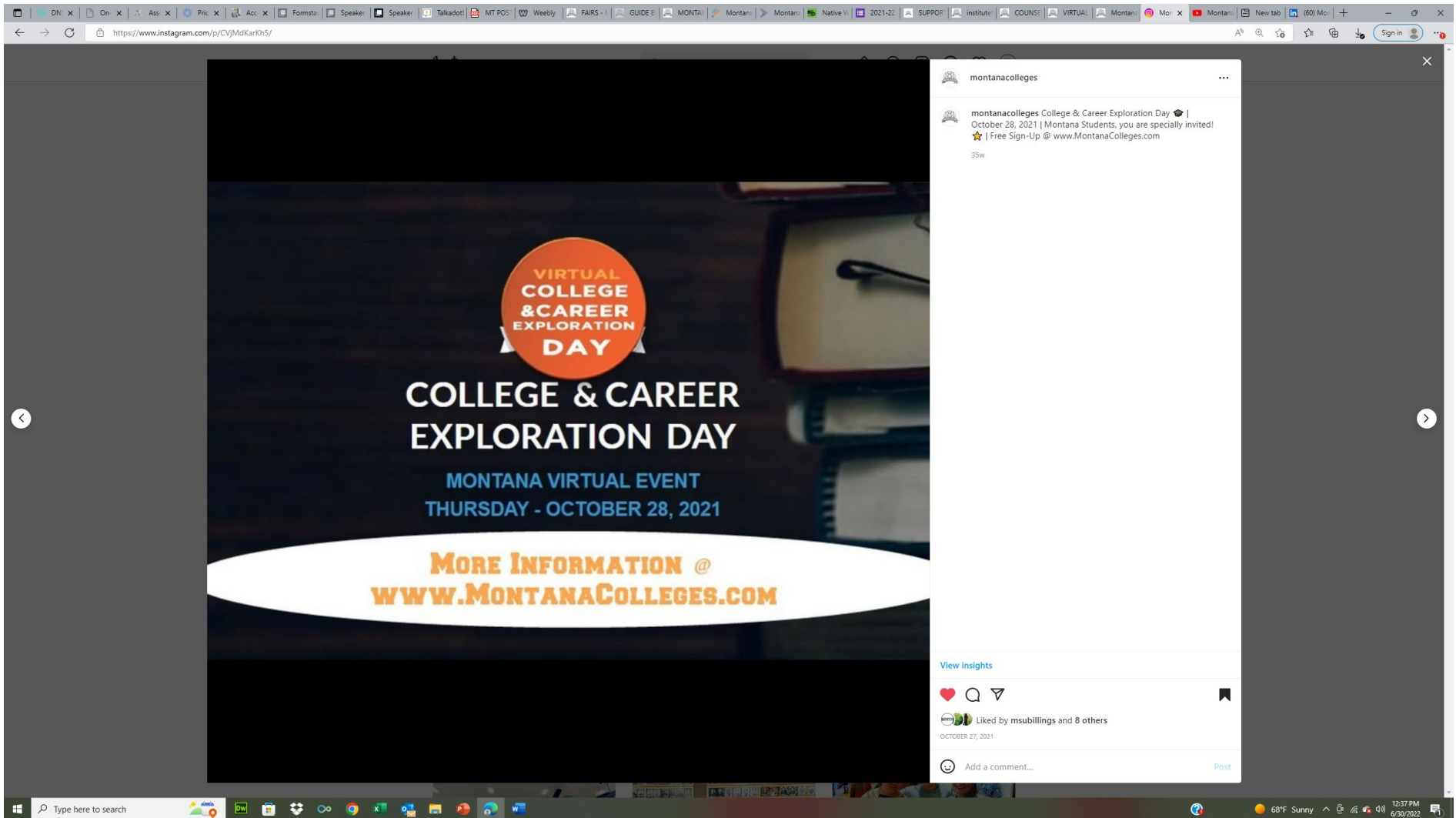
WHAT:

- 6 X 6 PRESENTATIONS - 6 COLLEGES PRESENT FOR 6 MINUTES EACH IN EACH SESSION BLOCK.
- FOR A SCHEDULE OF SESSIONS & REGISTRATION, VISIT: MONTANACOLLEGES.COM

HOW:

- THIS IS LIKE A BIG HIGH SCHOOL VISIT! HOST A PROJECTOR IN THE GYM OR LARGE ROOM FOR STUDENTS TO ATTEND THE BLOCK OF PRESENTATIONS THEY ARE INTERESTED IN.
- OR SIMPLY HAVE STUDENTS JOIN THE SESSIONS THEY LIKE ON THEIR OWN DEVICES (PHONE, LAPTOP, TABLET, & EAR BUDS).





montanacolleges

Thursday, October 28

10:00-10:45 AM Mountain		
A1: MONTANA Register 1 City College at Montana State University Billings 2 Miles Community College 3 Chief Dull Knife College 4 Montana State University Billings 5 Rocky Mountain College 6 Little Big Horn College	A2: MONTANA Register Great Falls College MSU University of Providence Stone Child College Blackfeet Community College Montana State University Northern Aaniiih Nakoda College	A3: OREGON & UTAH Register University of Oregon Linfield University Pacific University Oregon Eastern Oregon University University of Utah Westminster College
11:00-11:45 AM Mountain		
B1: MONTANA Register 1 Helena College 2 Carroll College 3 Gallatin College MSU 4 Montana State University 5 Dawson Community College 6 Fort Peck Community College	B2: VARIETY OF STATES Register University of Regina University of Alaska Fairbanks Northern Arizona University Western Colorado University The University of Tampa SCAD - Savannah College of Art and Design	B3: IDAHO & WASHINGTON Register Idaho State University University of Idaho Pacific Lutheran University Northwest University Gonzaga University Academy of Interactive Entertainment
12:00-12:45 PM Mountain		
C1: MONTANA Register 1 Flathead Valley Community College 2 Saisish Kootenai College 3 UM Missoula College 4 University of Montana 5 Montana Technological University 6 University of Montana Western	C2: NORTH DAKOTA & WYOMING Register University of Mary Dickinson State University Minot State University North Dakota State University Sheridan College Gillette College	C3: VARIETY OF PROGRAMS Register Verto Education United States Air Force MT Department of Transportation Montana Career Lab MDLI Student Resources Apprenticeship & Training Programs

montanacolleges MONTANA | COLLEGE & CAREER EXPLORATION DAY!

- ◆ **WHEN:** October 28, 2021 from 10am - 1pm | Ask your high school counselor about how to attend!
- ◆ **WHO:** Montana high school students, parents, & schools invited to attend! Learn about your options after high school, ask your questions to education experts, and sign-up for a chance to win \$1,000 College Ca\$h Scholarship* just by attending 1 live session (*for Montana juniors & seniors).
- ◆ 50+ colleges, universities, military, student services, & training programs. Free for all to attend!
- ◆ More information @ www.MontanaColleges.com

Edited · 35w

View insights

41 views
OCTOBER 25, 2021

Add a comment...

OUTLINE OF EVENTS



CONFIRMATION

PACKET

DAY 1 | Tuesday, October 26, 2021

| Live Counselor Update Sessions

- *For Counselors*
- **9 In-Person Sites Across Montana & Virtual Option** - Statewide Presentation
- **In-Person Sites Include:** Kalispell, Missoula, Helena, Havre, Great Falls, Bozeman, Billings, Miles City, Glasgow, or you may connect virtually from your own office via Zoom connection. **In-Person attendance will have lunch & continental breakfast provided.*
- **Time:** 10:00 am - 3:30pm
 - 10:00 a.m. Check-in & Welcome (Coffee, juice, and rolls are provided.)
 - 10:10 a.m. Welcome from MPSEOC | Montana Colleges
 - 10:15 a.m. MONTANA CAMPUS UPDATES
 - 11:15 a.m. Break (The exact Break time will be flexible due to the presenting layout.)
 - 11:30 a.m. MONTANA CAMPUS UPDATES
 - 12:15 p.m. Break, Lunch, & Discussion (Lunch provided.)
 - 12:45 p.m. MONTANA CAMPUS UPDATES
 - 1:30 p.m. Important Montana Announcements
 - 3:00 p.m. Questions, Wrap Up, & Evaluations
- **Counselor Prize Winner & Annual Award Announced.**
- **Times and events are subject to possible variations.*



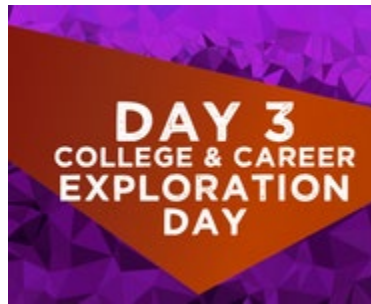
DAY 2 | Wednesday, October 27, 2021

- | Additional Counselor Resource Sessions

- *For Counselors*
- **Virtual - via Zoom Technology**
- **Time: 11:00 a.m. - 1:00 p.m.**
- **Sessions include:**
 - *The Montana Career Lab Resources | 11:00am-11:30am*
 - *Reach Higher Montana & Montana Youth Apprenticeship Partnership | 11:30am - 12:00pm*
 - *Higher Pathways & American Indian College Fund Resources / Funding | 11:45am - 12:15pm*
 - *Financial Aid Live Q&A with the MASFAA Experts | 12:30pm - 1:00pm*
- Sign Up & More Info

DAY 3 | Thursday, October 28, 2021

- | Student College & Career Exploration Day



[ACCESS SCHEDULE](#)

- **For Counselors, Students, & Parents**
- **Virtual - via Strivescan & Zoom Technology**
- **Time:** 10:00 a.m. - 1:00 p.m.
- **Format:** Variety of college presentations grouped in 6 colleges per session. This is a great way to see 6 different college options in one group visit. 9 different sessions with 50+ colleges, military, & more training programs.
- **Who:** Seniors, Juniors, Sophomores, Parents, Counselors, & beyond. All who are interested are welcome to attend for free! Please help spread the word!
- **How:** Counselors may easily setup a projector and chairs in their gym or large room for student viewing or students may simply join the sessions from their own device. This day is like a grouped high school visit! We will have a variety of Montana and Out-of-State Colleges and Universities along with many agencies, military, training programs in attendance to connect with you and your students. This is a great follow-up to the in-person fairs in September for students, parents, & counselors to connect even more. Sessions will be recorded for later use and reference as well.
- **[Schedule of Presenters](#)**
- **[Sign Up For Sessions & More Info](#)**

Thursday, October 28

10:00-10:45 AM Mountain

	A1: MONTANA Register	A2: MONTANA Register	A3: OREGON & UTAH Register
1	City College at Montana State University Billings	Great Falls College MSU	University of Oregon
2	Miles Community College	University of Providence	Linfield University
3	Chief Dull Knife College	Stone Child College	Pacific University Oregon
4	Montana State University Billings	Blackfeet Community College	Eastern Oregon University
5	Rocky Mountain College	Montana State University Northern	University of Utah
6	Little Big Horn College	Aaniiih Nakoda College	Westminster College

11:00-11:45 AM Mountain

	B1: MONTANA Register	B2: VARIETY OF STATES Register	B3: IDAHO & WASHINGTON Register
1	Helena College	University of Regina	Idaho State University
2	Carroll College	University of Alaska Fairbanks	University of Idaho
3	Gallatin College MSU	Northern Arizona University	Pacific Lutheran University
4	Montana State University	Western Colorado University	Northwest University
5	Dawson Community College	The University of Tampa	Gonzaga University
6	Fort Peck Community College	SCAD - Savannah College of Art and Design	Academy of Interactive Entertainment

12:00-12:45 PM Mountain

	C1: MONTANA Register	C2: NORTH DAKOTA & WYOMING Register	C3: VARIETY OF PROGRAMS Register
1	Flathead Valley Community College	University of Mary	Verto Education
2	Salish Kootenai College	Dickinson State University	United States Air Force
3	UM Missoula College	Minot State University	MT Department of Transportation
4	University of Montana	North Dakota State University	Montana Career Lab MDLI
5	Montana Technological University	Sheridan College	Student Resources
6	University of Montana Western	Gillette College	Apprenticeship & Training Programs



2021-2022 Promotions | Overview

Thank you for your partnership!

4 PRESS RELEASE & MEDIA PROMOTIONS



NEWS PRESS RELEASE

For Release: September 21, 2021

Contact: Amy Leary, MPSEOC Executive Director

Phone: 406.531.3531

Fax: 866.222.8978

Email: Amy.Leary@MontanaColleges.com

MORE DETAILS CAN BE FOUND @ the following links:

- ✓ www.MontanaColleges.com
 - ✓ www.MontanaColleges.com/fairs
-



Montana High School Students Invited to Shop for Colleges and Win Scholarship Money

Statewide Montana Virtual College Fairs throughout the state will feature 100+ higher education institutions, 500+ Live Sessions, 100's of Live 1-on-1 Meetings, and \$1,000's of scholarship money given away.

The Montana Post Secondary Educational Opportunities Council (MPSEOC) will host a Virtual College Fair throughout Montana beginning September 21st – 25th. MPSEOC has conducted statewide college fairs since 1987. 1,000's of high school seniors and/or juniors will attend the fairs with their classmates, families, and guidance counselors.

The college fairs give students an opportunity to contemplate their options after high school. Students can visit with representatives from in-state and out-of-state colleges and universities, technical and trade schools, and military branches. “The best tip I can give a high school student with regard to their post-secondary plans is to check out all of their options. College fairs allow students to see exactly what is out there and fuels excitement about finding the best fit for them,” said Amy Leary, MPSEOC Executive Director. **Although the fairs are geared to high school students, they are open to the general public and parents are encouraged to attend as well! Anyone who is interested in pursuing post-secondary education is welcome to attend.**

Another highlight of the college fairs is the *College Ca\$h Scholarship Program*. The College Ca\$h Program gives away 1000's of scholarship dollars to students across the state. The scholarships are awarded by a random drawing from the names of students who attend the college fairs. Both high school juniors and seniors are eligible to sign up. The scholarships are made possible by the donations from sponsors. These sponsors and partners are: Montana University System, GEAR UP, Office of Public Instruction, Reach Higher Montana, Montana Youth Apprenticeship Partnership, and the Montana Post Secondary Educational Opportunities council (MPSEOC).

We hope to see you at this year's Montana Virtual College Fairs! | *More Details Below*

Media Note: Members of the media are invited to attend any of the college fairs.

Thank you for sharing this information and supporting education in Montana! If you have any questions, please feel free to contact me.

I will be at this virtual event, but please leave me a message, and I will get back to you as soon as possible. Many thanks! Please feel free to use our website for more information as well.

- **[Preview The Montana Virtual College Fair | Live Fair – September 21 – 25, 2021](#)**

- | Learn about your options after high school all in one place!
- | \$1,000 Student Scholarships & prizes given away to attendees.
- | Meet over 108+ colleges, universities, military branches, agencies & more from around the world!
- | Choose from almost 500 different "Live Sessions" & 100's of "1-on-1 Meeting" options to attend for free!

- **[FREE Registration](#)** @ www.MontanaColleges.com

- **[Registration Open!](#)** | **USE Code: montana2021** | This security code has been added as another privacy measure. This code is listed on the registration page to help remind students to enter this code. Student / Counselor / Parent Free Registration is open for the September Virtual Fair Event. Registration can be done directly from www.MontanaColleges.com homepage by clicking the orange "Fair Register" button.

- **[Help Spread The Word | Media Tool Kit & Promos](#)**

We would love your help in spreading the word about this free event. We are promoting this virtual fair to Montana students, schools, parents, & families statewide. A Media Toolkit & other materials are also available to you on the [Fair Promotions Page](#).

- **[Welcome Video | Virtual Fair Overview](#)**

Now available is a short video that provides an overview of what students can find and do at the Montana Virtual College Fair! There are 108+ colleges, 500+ LIVE zoom sessions, and 100's of 1-on-1 LIVE meetings to choose from. "My Schedule" (and the reminders that students add there ahead of time) is a great way to organize their fair experience.

- **[List of Exhibiting Colleges](#)**

- [See all 108+ exhibitors in the Virtual Fair](#)
- Watch Intro Snapshot Videos of all Colleges in the Virtual Fair – on our [YouTube Channel](#) & Fair Profiles

[More Information](#)

We hope to "see" you at this Montana Virtual College Fair this week! 😊

2021-2022 Promotions | Overview

Thank you for your partnership!

4 PRESS RELEASE & MEDIA PROMOTIONS (Continued)



Montana Tribal College Team



For Release: March 14, 2022

Contact: Amy Leary, MPSEOC Executive Director

Phone: 406.531.3531

Fax: 866.222.8978

Email: Amy.Leary@MontanaColleges.com

On Behalf of Montana's Tribal Colleges and MPSEOC,

You Are Invited to Attend a Fair in Your Area to Search for College and Career Options and Win Money!

6 Tribal College events throughout the state will feature colleges, universities, military branches, agencies, and many career options and a chance to win scholarships and prizes!

The Montana Post Secondary Educational Opportunities Council (MPSEOC) and the Montana Tribal Colleges will host 6 events in Montana starting March 19 (see schedule attached and below). We are very excited to offer this Tribal College/Career Fair Circuit for the seventh year in Montana! It is our goal to serve hundreds of college students, high school students, nontraditional students, families, guidance counselors, and community members with this event. Everyone is invited to attend for free!

The college fairs give students an opportunity to contemplate their higher education and career options. Students can visit with representatives from in-state and out-of-state colleges and universities, technical and trade schools, military branches, agencies, and career representatives.

Although the fairs are geared to college students and high school students, they are open to the general public and parents are encouraged to attend as well! Anyone who is interested in pursuing post-secondary education and career research is welcome to attend.

Another highlight of the college fairs is the *Scholarship Program and Door Prizes*. Each fair will have \$500 in scholarship money to be given away and many great door prizes for those attendees of each fair. The scholarships and prizes are awarded by a random drawing from the names of people who attend these Tribal College Fairs. Therefore, by just attending a fair, students can walk away with money to put toward their education.

We hope to see you at this year's Montana Tribal College / Career Fairs!

A very special thank you to our sponsors of this event:

- GEAR UP
- Montana University System
- Reach Higher Montana
- Office of Public Instruction - OPI
- American Indian College Fund
- Bank of North Dakota
- All the Montana Colleges and Universities that help support this event
- MPSEOC - Montana Post Secondary Educational Opportunities Council

Thank you for sharing this information and supporting education in Montana! If you have any questions, please feel free to contact me. Many thanks! Please feel free to use our website www.MontanaTribalColleges.org or www.MontanaColleges.com for more information as well.



2021-2022 Promotions | Overview

Thank you for your partnership!

- 5 ADDITIONAL PROMOTIONS & EVENTS | SUMMER CONFERENCE, FAIRS, SOCIAL MEDIA POSTS, EVENT PROMOTIONS, & MORE!

Please see [separate photo file](#) for this larger document of photos and promotions. You are welcome to use any photos, etc.

| and many more online form, email, newsletter, and verbal recognition and thanks.